



**Phase II Municipalities  
IDEP Reporting  
On behalf of:**

Burton  
Davison Twp.  
Flint Twp.  
Genesee County  
Mt. Morris  
Vienna Twp.

Clio  
Fenton  
Flushing  
Grand Blanc  
Mt Morris Twp.

Davison  
Fenton Twp.  
Genesee Twp.  
Linden  
Swartz Creek

***March 1, 2025-December 31, 2025  
Reporting Period***

***Prepared by:***

***The Genesee County Drain Commissioner SWM  
On behalf of Genesee County and contracted Communities***

This report summarizes activities completed for the period from March 1, 2025, to December 31, 2025, by the Genesee County Drain Commissioner's Office and the contracted Phase II Municipalities to meet the requirements of their National Pollutant Discharge Elimination System (NPDES) permit. This report is broken into six sections to coincide with the MI Waters website.

- PPP
- PEP
- **IDEP – Illicit Discharge Elimination Program**
- General Permit Requirements



The Illicit Discharge Elimination Plan (IDEP) is a program to eliminate illicit discharges and connections, including the discharge of sanitary wastewater, to Municipal Separate Storm Sewer System (MS4). The County agent through a contract with the referenced communities conducts dry weather screening of all municipal separate storm sewer system (MS4) outfalls and point of discharges.

Dry Weather testing is performed over the permit cycle. This section summarizes the IDEP activities including the **\*illicit connections** identified during the 2025-2026 IDEP field investigations. Dry Weather Screening after March 1, 2026-Present will be reported in next reporting cycle.

#### Outfalls – Dry Weather Testing

Outfall ID	Jurisdiction	Date Investigated
6613512-7ST	GC Drain Commission	2025-04-28
6613512-7SW	GC Drain Commission	2025-04-28
6613512-7W	GC Drain Commission	2025-04-28
6613512-7E	GC Drain Commission	2025-04-28
6613512-7SB	GC Drain Commission	2025-04-28
6613512-8	GC Drain Commission	2025-04-28
6613512-9	GC Drain Commission	2025-04-28
7702767	GC Drain Commission	2025-04-28
7702767-2E	GC Drain Commission	2025-04-28
7702767-2N	GC Drain Commission	2025-04-28
3709Owen_Followup01S	GC Drain Commission	2025-04-28
3709Owen_Followup01E	GC Drain Commission	2025-04-28
3709Owen_Followup02	GC Drain Commission	2025-04-28
3709Owen_Followup03	GC Drain Commission	2025-04-28
3709Owen_Followup04	GC Drain Commission	2025-04-28
3709Owen_Followup05	GC Drain Commission	2025-04-28
6501105	GC Drain Commission	2025-04-28
6613512	GC Drain Commission	2025-04-28
6613512-2	GC Drain Commission	2025-04-28
6703256	GC Drain Commission	2025-05-12
6728007-1E	GC Drain Commission	2025-05-12
6728007-1W	GC Drain Commission	2025-05-12
7633511-1	GC Drain Commission	2025-05-12
7633511-2AE	GC Drain Commission	2025-05-12
7633511-2AW	GC Drain Commission	2025-05-12
8726503	GC Drain Commission	2025-05-12
8726503-1	GC Drain Commission	2025-05-12
8726503-3AW	GC Drain Commission	2025-05-12
8726503-3	GC Drain Commission	2025-05-12
6728007-1N	GC Drain Commission	2025-05-12
7714003	GC Drain Commission	2025-05-12
7633511	GC Drain Commission	2025-05-12



7633511-2	GC Drain Commission	2025-05-12
8833016	GC Drain Commission	2025-05-12
8726503-2	GC Drain Commission	2025-05-12
8726503-3AN	GC Drain Commission	2025-05-12
8726503-3AE	GC Drain Commission	2025-05-12
5620519	City of Linden	2025-05-14
5625506	City of Fenton	2025-05-14
5625509	City of Fenton	2025-05-14
5625513	City of Fenton	2025-05-14
5636253	City of Fenton	2025-05-14
5625752	City of Fenton	2025-05-14
7604231	GC Road Commission	2025-05-14
7604233	GC Road Commission	2025-05-14
8632758	GC Drain Commission	2025-05-14
8632757	GC Drain Commission	2025-05-14
8632756	GC Drain Commission	2025-05-14
8634501	GC Drain Commission	2025-05-15
8634502	GC Drain Commission	2025-05-15
8634502-1SE	GC Drain Commission	2025-05-15
8634503	GC Drain Commission	2025-05-15
8634502-1E	GC Drain Commission	2025-05-15
7606251	GC Road Commission	2025-05-15
8631753	GC Road Commission	2025-05-15
8632501-1	GC Drain Commission	2025-05-15
7605255	GC Road Commission	2025-05-15
7605254	GC Road Commission	2025-05-15
8632751	GC Road Commission	2025-05-15
8632759	GC Road Commission	2025-05-15
8632501	GC Drain Commission	2025-05-15
7605256	GC Road Commission	2025-05-15
7605253	GC Road Commission	2025-05-15
7604005	GC Road Commission	2025-05-15
8631747	GC Road Commission	2025-05-15
8631745	GC Road Commission	2025-05-15
8631752	GC Road Commission	2025-05-15
8631751	GC Road Commission	2025-05-15
7715761	GC Drain Commission	2025-05-27
8724754	GC Drain Commission	2025-05-27
7701530	GC Drain Commission	2025-05-27
8724752	GC Drain Commission	2025-05-27
5621003	GC Drain Commission	2025-05-28
6722003	GC Road Commission	2025-05-28
7631252	GC Drain Commission	2025-05-28
8713005	GC Road Commission	2025-05-28



8714257	GC Road Commission	2025-05-28
8714008	GC Road Commission	2025-05-28
8714253	GC Road Commission	2025-05-28
8714251	GC Road Commission	2025-05-28
7701766	GC Drain Commission	2025-05-28
7701766-1N	GC Drain Commission	2025-05-28
7701766-1E	GC Drain Commission	2025-05-28
8713006	GC Road Commission	2025-05-28
8714256	GC Road Commission	2025-05-28
8714252	GC Road Commission	2025-05-28
8714255	GC Road Commission	2025-05-28
8714254	GC Road Commission	2025-05-28
8725011	GC Drain Commission	2025-05-27
8523752	GC Drain Commission	2025-06-02
8523756	GC Drain Commission	2025-06-02
8523755	GC Drain Commission	2025-06-02
8523758	GC Drain Commission	2025-06-02
8523760	GC Road Commission	2025-06-02
8524518	GC Road Commission	2025-06-02
8522256	GC Drain Commission	2025-06-02
8522254-1S	GC Drain Commission	2025-06-02
8522252	GC Drain Commission	2025-06-02
8522253	GC Drain Commission	2025-06-02
8527260	GC Drain Commission	2025-06-02
8599752	GC Road Commission	2025-06-02
8522257	GC Road Commission	2025-06-02
8523754	GC Drain Commission	2025-06-02
8523757	GC Drain Commission	2025-06-02
8523753	GC Drain Commission	2025-06-02
8524505	GC Road Commission	2025-06-02
8524504	GC Road Commission	2025-06-02
8522254-1E	GC Drain Commission	2025-06-02
8522255	GC Drain Commission	2025-06-02
8522507	GC Drain Commission	2025-06-02
8599751	GC Road Commission	2025-06-02
8515755	GC Road Commission	2025-06-02
8522251	GC Drain Commission	2025-06-02
8525504	GC Drain Commission	2025-06-02
7803001	GC Drain Commission	2025-06-03
8631752	GC Road Commission	2025-05-15
7816501-4E	GC Drain Commission	2025-06-03
7816501-5E	GC Drain Commission	2025-06-03
7816501-5W	GC Drain Commission	2025-06-03
7816501-5S	GC Drain Commission	2025-06-03



7807836-1A	GC Drain Commission	2025-06-03
7633511	GC Drain Commission	2025-06-03
7803001-1	GC Drain Commission	2025-06-03
7816501-4S	GC Drain Commission	2025-06-03
7816501-4W	GC Drain Commission	2025-06-03
7819253	GC Drain Commission	2025-06-03
7807836	GC Drain Commission	2025-06-03
7633511-1	GC Drain Commission	2025-06-03
8724754-1A	GC Drain Commission	2025-06-04
8819501-2W	GC Drain Commission	2025-06-04
8726516-1	GC Drain Commission	2025-06-04
7711760	GC Drain Commission	2025-06-04
8724754	GC Drain Commission	2025-06-04
8819501-1N	GC Drain Commission	2025-06-04
8819501-2N	GC Drain Commission	2025-06-04
8819501-2S	GC Drain Commission	2025-06-04
8724753	GC Drain Commission	2025-06-04
8726516	GC Drain Commission	2025-06-04
7711760-1	GC Drain Commission	2025-06-04
7625251	GC Drain Commission	2025-06-06
7625751	GC Drain Commission	2025-06-06
7625251-1	GC Drain Commission	2025-06-06
7731007	GC Drain Commission	2025-06-06
7731007-1	GC Drain Commission	2025-06-06
7731524-1	GC Drain Commission	2025-06-06
6601251	GC Drain Commission	2025-06-06
6601254	GC Road Commission	2025-06-06
7636751	GC Drain Commission	2025-06-06
7636753	GC Drain Commission	2025-06-06
6601255-1	GC Drain Commission	2025-06-06
6601007	GC Drain Commission	2025-06-06
6601760	GC Drain Commission	2025-06-06
6707030	GC Road Commission	2025-06-06
6707003	GC Road Commission	2025-06-06
6707006	GC Road Commission	2025-06-06
6707008	GC Road Commission	2025-06-06
6707017	GC Drain Commission	2025-06-06
6707005	GC Drain Commission	2025-06-06
6707545	GC Drain Commission	2025-06-06
6707527	GC Drain Commission	2025-06-06
7625751-1	GC Drain Commission	2025-06-06
7625251-2	GC Drain Commission	2025-06-06
7625760	GC Drain Commission	2025-06-06
7625760-1	GC Drain Commission	2025-06-06



7731003-1	City of Burton	2025-06-06
7731539	City of Burton	2025-06-06
7731524	GC Drain Commission	2025-06-06
6601251-1	GC Drain Commission	2025-06-06
7636753-1	GC Drain Commission	2025-06-06
6601255	GC Drain Commission	2025-06-06
6707019	GC Drain Commission	2025-06-06
6707541	GC Drain Commission	2025-06-06
6707501	GC Drain Commission	2025-06-06
6707507	GC Drain Commission	2025-06-06
6707513	GC Drain Commission	2025-06-06
6707527-1	GC Drain Commission	2025-06-06
9623510	GC Road Commission	2025-06-10
9623512	GC Road Commission	2025-06-10
9623511	GC Road Commission	2025-06-10
9626012	GC Road Commission	2025-06-10
9626014	GC Road Commission	2025-06-10
8727759-7	GC Drain Commission	2025-06-10
8727759-13	GC Drain Commission	2025-06-10
8727759-12	GC Drain Commission	2025-06-10
8727759-10	GC Drain Commission	2025-06-10
9615509-4SE	City of Clio	2025-06-10
8727759-15E	GC Drain Commission	2025-06-10
8727759-15N	GC Drain Commission	2025-06-10
8733251	GC Road Commission	2025-06-10
8733251-5	GC Road Commission	2025-06-10
8710503	GC Road Commission	2025-06-10
8733251-4	GC Road Commission	2025-06-10
8710754	GC Road Commission	2025-06-10
8710501	GC Drain Commission	2025-06-10
8733251-6	GC Road Commission	2025-06-10
8710761	GC Road Commission	2025-06-10
8710762	GC Road Commission	2025-06-10
8710763	GC Road Commission	2025-06-10
8713004	GC Road Commission	2025-06-10
8713002	GC Road Commission	2025-06-10
8713252	GC Road Commission	2025-06-10
8713254	GC Road Commission	2025-06-10
8734756	GC Road Commission	2025-06-10
8734756-1W	GC Road Commission	2025-06-10
9623513	GC Road Commission	2025-06-10
8733002	GC Drain Commission	2025-06-10
9626013	GC Road Commission	2025-06-10
8733002-1	GC Road Commission	2025-06-10



9615509-2	City of Clio	2025-06-10
8727759-9	GC Drain Commission	2025-06-10
9615509-3SE	City of Clio	2025-06-10
9615509-3SW	City of Clio	2025-06-10
8727759-11	GC Drain Commission	2025-06-10
9615509-4SW	City of Clio	2025-06-10
8710502	GC Road Commission	2025-06-10
8710760	GC Road Commission	2025-06-10
8710752	GC Road Commission	2025-06-10
8710757	GC Drain Commission	2025-06-10
8713003	GC Road Commission	2025-06-10
8713253	GC Road Commission	2025-06-10
8734756-1NE	GC Road Commission	2025-06-10
6703256	GC Drain Commission	2025-06-11
6703256-1	GC Drain Commission	2025-06-11
6703256-2A	GC Drain Commission	2025-06-11
6703256-3	GC Drain Commission	2025-06-11
6703256-5	GC Drain Commission	2025-06-11
6703256-4	GC Drain Commission	2025-06-11
7715757	GC Drain Commission	2025-06-11
7715757-1	GC Drain Commission	2025-06-11
7631252	GC Drain Commission	2025-06-11
8733501	GC Road Commission	2025-06-12
7701527	GC Drain Commission	2025-06-12
8733001	GC Road Commission	2025-06-12
7701527-1NE	GC Drain Commission	2025-06-12
8728502	GC Road Commission	2025-06-12
7701527-2SE	GC Drain Commission	2025-06-12
7701527-2S	GC Drain Commission	2025-06-12
7710006	GC Drain Commission	2025-06-12
8708502	GC Road Commission	2025-06-12
8705501	GC Road Commission	2025-06-12
8705502	GC Road Commission	2025-06-12
8705503	GC Road Commission	2025-06-12
7702009	GC Drain Commission	2025-06-12
8708752	GC Road Commission	2025-06-12
7701527-1W	GC Drain Commission	2025-06-12
8728501	GC Road Commission	2025-06-12
8728503	GC Road Commission	2025-06-12
8721505	GCP&R	2025-06-12
8721509	GC Road Commission	2025-06-12
8728001	GC Road Commission	2025-06-12
8720752	GC Road Commission	2025-06-12
8720753	GC Road Commission	2025-06-12



8720754	GC Road Commission	2025-06-12
7702751	GC Drain Commission	2025-06-12
8720754	GC Road Commission	2025-06-12
8720509	GC Drain Commission	2025-06-12
8720508	GC Drain Commission	2025-06-12
7710005	GC Drain Commission	2025-06-12
8717004	GC Road Commission	2025-06-12
8717003	GC Road Commission	2025-06-12
8717002	GC Road Commission	2025-06-12
7710012	GC Drain Commission	2025-06-12
8708501	GC Road Commission	2025-06-12
8708503	GC Road Commission	2025-06-12
8705504	GC Road Commission	2025-06-12
8708751	GC Road Commission	2025-06-12
8713255	GC Road Commission	2025-06-17
6623001	GC Drain Commission	2025-06-17
R6722252	GC Road Commission	2025-06-17
8734760	GC Road Commission	2025-06-17
8721256	GC Road Commission	2025-06-17
8715251	GCP&R	2025-06-17
6623001-1W	GC Drain Commission	2025-06-17
6623001-1NW	GC Drain Commission	2025-06-17
8734760-1	GC Road Commission	2025-06-17
8721510	GC Road Commission	2025-06-17
8721255	GC Road Commission	2025-06-17
8727008	GC Road Commission	2025-06-17
8715252	GCP&R	2025-06-17
8515754	GC Drain Commission	2025-06-18
8515002	GC Road Commission	2025-06-18
8515251	GC Road Commission	2025-06-18
8516751	GC Road Commission	2025-06-18
8515001	GC Road Commission	2025-06-18
8516252	GC Road Commission	2025-06-18
8510501	GC Road Commission	2025-06-18
8720255	GC Road Commission	2025-06-18
8720254	GC Road Commission	2025-06-18
3709Owen_Followup02W	GC Drain Commission	2025-06-24
8525260	GC Road Commission	2025-06-24
8619229	GC Road Commission	2025-06-24
3709Owen_Followup04	GC Drain Commission	2025-06-24
8525259	GC Road Commission	2025-06-24
8619761	GC Road Commission	2025-06-24
8619231	GC Road Commission	2025-06-24
8618747	GC Road Commission	2025-06-24



8630252	GC Road Commission	2025-06-24
8630753	GC Road Commission	2025-06-24
8619254	GC Road Commission	2025-06-24
8619252	GC Road Commission	2025-06-24
8513751	GC Road Commission	2025-06-24
8524251	GC Road Commission	2025-06-24
8513507	GC Road Commission	2025-06-24
8619505	GC Road Commission	2025-06-24
3709Owen_Followup02NW	GC Drain Commission	2025-06-24
3709Owen_Followup02S	GC Drain Commission	2025-06-24
3709Owen_Followup03	GC Drain Commission	2025-06-24
8619501	GC Road Commission	2025-06-24
8619504	GC Road Commission	2025-06-24
8619760	GC Road Commission	2025-06-24
8619506	GC Road Commission	2025-06-24
8630751	GC Road Commission	2025-06-24
8630759	GC Drain Commission	2025-06-24
8630251	GC Road Commission	2025-06-24
8619253	GC Road Commission	2025-06-24
8619251	GC Road Commission	2025-06-24
8513753	GC Road Commission	2025-06-24
8524252	GC Road Commission	2025-06-24
8513506	GC Road Commission	2025-06-24
8513508	GC Road Commission	2025-06-24
8524003	GC Drain Commission	2025-06-24
8524003-1	GC Drain Commission	2025-06-24
8629001	GC Road Commission	2025-06-30
8629007	GC Road Commission	2025-06-30
8629006	GC Road Commission	2025-06-30
8629503	GC Road Commission	2025-06-30
8621749	GC Road Commission	2025-06-30
8628001	GC Road Commission	2025-06-30
8621752	GC Road Commission	2025-06-30
8621751	GC Drain Commission	2025-06-30
8622749	GC Drain Commission	2025-06-30
8622749-1NW	GC Drain Commission	2025-06-30
8622749-1SW	GC Drain Commission	2025-06-30
8622749-1SE	GC Drain Commission	2025-06-30
8621252-1	GC Drain Commission	2025-06-30
8622247	GC Road Commission	2025-06-30
8622249	GC Road Commission	2025-06-30
8621499	GC Road Commission	2025-06-30
8623003	GC Road Commission	2025-06-30
8614237	GC Road Commission	2025-06-30



8612501	GC Road Commission	2025-06-30
8612502	GC Road Commission	2025-06-30
9623509	GC Drain Commission	2025-06-30
9620253	GC Road Commission	2025-06-30
9608773	GC Road Commission	2025-06-30
9617252	GC Road Commission	2025-06-30
9608751	GC Road Commission	2025-06-30
8522004	GC Road Commission	2025-06-30
8522509	GC Road Commission	2025-06-30
8629006	GC Road Commission	2025-06-30
8629503	GC Road Commission	2025-06-30
8621753	GC Road Commission	2025-06-30
8621252	GC Drain Commission	2025-06-30
8621491	GC Road Commission	2025-06-30
8621253	GC Road Commission	2025-06-30
8621497	GC Road Commission	2025-06-30
8615501	GC Drain Commission	2025-06-30
8623002	GC Road Commission	2025-06-30
8623001	GC Road Commission	2025-06-30
8611764	GC Road Commission	2025-06-30
9616502	GC Drain Commission	2025-06-30
8611763	GC Road Commission	2025-06-30
9620255	GC Road Commission	2025-06-30
8522508	GC Drain Commission	2025-06-30
5634255	City of Fenton	2025-07-30
9608967-2N	GC Drain Commission	2025-07-30
5627760	City of Fenton	2025-07-30
5627761	City of Fenton	2025-07-30
5627765	City of Fenton	2025-07-30
9626010	GC Road Commission	2025-07-30
9624501	GC Road Commission	2025-07-30
9626008	GC Drain Commission	2025-07-30
9617262	GC Road Commission	2025-07-30
9617751	GC Road Commission	2025-07-30
9617258	GC Road Commission	2025-07-30
9625501	GC Road Commission	2025-07-30
9625504	GC Road Commission	2025-07-30
9625505	GC Road Commission	2025-07-30
5626005	City of Fenton	2025-07-30
5627253	City of Fenton	2025-07-30
9608967	GC Drain Commission	2025-07-30
9608967-1SE	GC Drain Commission	2025-07-30
9608967-2S	GC Drain Commission	2025-07-30
9608967-3E	GC Drain Commission	2025-07-30



9608967-4SE	GC Drain Commission	2025-07-30
9626011	GC Road Commission	2025-07-30
9617263	GC Road Commission	2025-07-30
9609502	GC Road Commission	2025-07-30
9608501	GC Road Commission	2025-07-30
9608772	GC Road Commission	2025-07-30
9616003	GC Road Commission	2025-07-30
9617261	GC Road Commission	2025-07-30
9634103	GC Road Commission	2025-07-30
9625502	GC Road Commission	2025-07-30
5634259	City of Fenton	2025-07-30
5627762	City of Fenton	2025-07-30
5627763	City of Fenton	2025-07-30
9608967-4E	GC Drain Commission	2025-07-30
9623509-1	GC Drain Commission	2025-07-30
5627764	City of Fenton	2025-07-30
5627002	City of Fenton	2025-07-30
9626009	GC Road Commission	2025-07-30
5635001	City of Fenton	2025-07-30
9608999	GC Road Commission	2025-07-30
9608997	GC Road Commission	2025-07-30
5635251	City of Fenton	2025-07-30
5635003	City of Fenton	2025-07-30
5635003-1	City of Fenton	2025-07-30
9608771	GC Road Commission	2025-07-30
MH_Caroline St	GC Drain Commission	2025-07-30
9617762	GC Road Commission	2025-07-30
9627501	GC Road Commission	2025-07-30
5626502	City of Fenton	2025-07-30
9627503	GC Road Commission	2025-07-30
9626751	GC Road Commission	2025-07-30
9635252	GC Road Commission	2025-07-30
5626501	City of Fenton	2025-07-30
5626007	City of Fenton	2025-07-30
9608967-1NW	GC Drain Commission	2025-07-30
9608967-2E	GC Drain Commission	2025-07-30
9608967-3NE	GC Drain Commission	2025-07-30
9608967-4N	GC Drain Commission	2025-07-30
9623509	GC Drain Commission	2025-07-30
9626001	GC Road Commission	2025-07-30
9609501	GC Road Commission	2025-07-30
9608515	GC Road Commission	2025-07-30
9608514	GC Drain Commission	2025-07-30
9617251	GC Road Commission	2025-07-30



9617260	GC Road Commission	2025-07-30
9617259	GC Road Commission	2025-07-30
9626752	GC Road Commission	2025-07-30
9636002	GC Road Commission	2025-07-30
6728007-1W	GC Drain Commission	2025-08-05
6728007-1N	GC Drain Commission	2025-08-05
8504700-IDC24	GC Drain Commission	2025-08-05
8515001	Flushing Township	2025-08-05
8510754	GC Road Commission	2025-08-05
8510756	GC Road Commission	2025-08-05
7801444-IDC25-1E	GC Drain Commission	2025-08-05
8510254	GC Road Commission	2025-08-05
8501519	GC Road Commission	2025-08-05
7703251-2N	GC Drain Commission	2025-08-05
8513002	GC Road Commission	2025-08-05
8513006	GC Road Commission	2025-08-05
7703251-3SE	GC Drain Commission	2025-08-05
7703251-3S	GC Drain Commission	2025-08-05
8513005	GC Road Commission	2025-08-05
8515754-3W	GC Drain Commission	2025-08-05
7816501-4S	GC Drain Commission	2025-08-05
7816501-4E	GC Drain Commission	2025-08-05
8512251	GC Drain Commission	2025-08-05
8515754-7N	GC Drain Commission	2025-08-05
8512253	GC Road Commission	2025-08-05
8513251	GC Road Commission	2025-08-05
8512782	GC Road Commission	2025-08-05
8513252	GC Road Commission	2025-08-05
8524002	GC Road Commission	2025-08-05
6728007-1SE	GC Drain Commission	2025-08-05
7801444-IDC25	GC Drain Commission	2025-08-05
8510753	GC Road Commission	2025-08-05
8510755	GC Road Commission	2025-08-05
7801444-IDC25-1NE	GC Drain Commission	2025-08-05
8501518	GC Road Commission	2025-08-05
8512240	GC Road Commission	2025-08-05
8501516	GC Road Commission	2025-08-05
8501517	GC Road Commission	2025-08-05
7703251-1W	GC Drain Commission	2025-08-05
7703251-2SW	GC Drain Commission	2025-08-05
7703251-3W	GC Drain Commission	2025-08-05
7703251-1A	GC Drain Commission	2025-08-05
8513504	GC Road Commission	2025-08-05
7803503	City of Davison	2025-08-05



8513505	GC Road Commission	2025-08-05
8515754-3SW	GC Drain Commission	2025-08-05
7816501-4W	GC Drain Commission	2025-08-05
8515754-8SE	GC Drain Commission	2025-08-05
8515754-8SW	GC Drain Commission	2025-08-05
8515754-7S	GC Drain Commission	2025-08-05
8512252	GC Road Commission	2025-08-05
8515754	GC Drain Commission	2025-08-05
8512780	GC Road Commission	2025-08-05
8524001	GC Road Commission	2025-08-05
8528252	GC Road Commission	2025-08-06
8528251	GC Road Commission	2025-08-06
8515757	GC Road Commission	2025-08-06
8514505	GC Road Commission	2025-08-06
8514504	GC Road Commission	2025-08-06
8514503	GC Road Commission	2025-08-06
8514502	GC Road Commission	2025-08-06
8514008	GC Road Commission	2025-08-06
8514005	GC Road Commission	2025-08-06
8514004	GC Road Commission	2025-08-06
8515253	GC Road Commission	2025-08-06
8515252	GC Road Commission	2025-08-06
8515759	GC Road Commission	2025-08-06
8524517	GC Drain Commission	2025-08-06
8631508	GC Drain Commission	2025-08-06
8632109	GC Drain Commission	2025-08-06
8632001-1	GC Road Commission	2025-08-06
8629751	GC Road Commission	2025-08-06
8607005	GC Road Commission	2025-08-06
8607004	GC Road Commission	2025-08-06
8606757	GC Drain Commission	2025-08-06
8605611	GC Road Commission	2025-08-06
8606751	GC Road Commission	2025-08-06
8527002	GC Road Commission	2025-08-06
8527003	GC Road Commission	2025-08-06
8515756	GC Road Commission	2025-08-06
8514506	GC Road Commission	2025-08-06
8514501	GC Road Commission	2025-08-06
8514006	GC Road Commission	2025-08-06
8514007	GC Road Commission	2025-08-06
8514003	GC Road Commission	2025-08-06
8515760	GC Road Commission	2025-08-06
8515758	GC Road Commission	2025-08-06
8525258	GC Drain Commission	2025-08-06



8631501	GC Drain Commission	2025-08-06
8631747	GC Road Commission	2025-08-06
8632018	GC Drain Commission	2025-08-06
8632001	GC Road Commission	2025-08-06
8629753	GC Road Commission	2025-08-06
8632117	GC Road Commission	2025-08-06
8607002	GC Road Commission	2025-08-06
8607002	GC Road Commission	2025-08-06
8606761	GC Road Commission	2025-08-06
8605609	GC Drain Commission	2025-08-06
8717502	GC Road Commission	2025-08-07
8716506	GC Road Commission	2025-08-07
8717251	GC Road Commission	2025-08-07
8717255	GC Road Commission	2025-08-07
8709259	GC Road Commission	2025-08-07
8710012	GC Road Commission	2025-08-07
8710008	GC Road Commission	2025-08-07
8711002	GC Road Commission	2025-08-07
8717253	GC Road Commission	2025-08-07
8710011	GC Road Commission	2025-08-07
8711004	GC Road Commission	2025-08-07
8711501	GCP&R	2025-08-07
8714012-1	GC Road Commission	2025-08-07
8714011	GC Road Commission	2025-08-07
8714009	GC Road Commission	2025-08-07
8711754	GC Road Commission	2025-08-07
8714760	GC Road Commission	2025-08-07
8713001	GC Drain Commission	2025-08-07
8714012	GC Road Commission	2025-08-07
8711751	GC Road Commission	2025-08-07
8631745	GC Road Commission	2025-08-06
8632003	GC Road Commission	2025-08-06
8717501	GC Road Commission	2025-08-07
8717252	GC Road Commission	2025-08-07
8717256	GC Road Commission	2025-08-07
8717257	GC Road Commission	2025-08-07
8710010	GC Road Commission	2025-08-07
8710013	GC Road Commission	2025-08-07
8711001	GC Road Commission	2025-08-07
8711503	GC Road Commission	2025-08-07
8711502	GCP&R	2025-08-07
8714013	GC Road Commission	2025-08-07
8714010	GC Road Commission	2025-08-07
8721505	GCP&R	2025-08-25



8713002	GC Road Commission	2025-08-25
8713002-1	GC Road Commission	2025-08-25
8734756	GC Road Commission	2025-08-25
8734756-1W	GC Road Commission	2025-08-25
8733002	GC Drain Commission	2025-08-25
8733002-1	GC Drain Commission	2025-08-25
8733002-3S	GC Drain Commission	2025-08-25
7710754-2NE	GC Drain Commission	2025-08-25
7710754-2NW	GC Drain Commission	2025-08-25
7710754-3SSW	GC Drain Commission	2025-08-25
7710754-3S	GC Drain Commission	2025-08-25
7710754	GC Drain Commission	2025-08-25
8720503	GC Drain Commission	2025-08-25
8734756-1N	GC Road Commission	2025-08-25
8733002-2	GC Drain Commission	2025-08-25
8733002-3N	GC Drain Commission	2025-08-25
7710754-2SW	GC Drain Commission	2025-08-25
7710754-2S	GC Drain Commission	2025-08-25
7710754-3W	GC Drain Commission	2025-08-25
8720505	GC Drain Commission	2025-08-25
8720510	GC Drain Commission	2025-08-25
8720507	GC Drain Commission	2025-08-25
8612751	GC Drain Commission	2025-08-25
8612274	GC Road Commission	2025-08-25
8612002	GC Drain Commission	2025-08-25
8706506-SSE	City of Mt. Morris	2025-08-25
8706506-S	City of Mt. Morris	2025-08-25
8606503	GC Road Commission	2025-08-26
8512254	GC Road Commission	2025-08-26
7604004	GC Road Commission	2025-08-26
8512510	GC Road Commission	2025-08-26
8513000	GC Road Commission	2025-08-26
8512509	GC Road Commission	2025-08-26
8513497	GC Road Commission	2025-08-26
8513999	GC Road Commission	2025-08-26
8618502	GC Road Commission	2025-08-26
8618503	GC Road Commission	2025-08-26
8524253-1	GC Drain Commission	2025-08-26
8619247	GC Road Commission	2025-08-26
8619101	GC Road Commission	2025-08-26
8618749	GC Road Commission	2025-08-26
8619760	GC Drain Commission	2025-08-26
8629004	GC Drain Commission	2025-08-26
8629774	GC Drain Commission	2025-08-26



8629773	GC Drain Commission	2025-08-26
8629772	GC Drain Commission	2025-08-26
8633751	GC Drain Commission	2025-08-26
8622747-1N	GC Drain Commission	2025-08-26
8622747-1E	GC Drain Commission	2025-08-26
8605599	GC Road Commission	2025-08-26
8512256	GC Road Commission	2025-08-26
8512255	GC Road Commission	2025-08-26
8513003	GC Road Commission	2025-08-26
8513499	GC Road Commission	2025-08-26
8513758	GC Road Commission	2025-08-26
8618501	GC Road Commission	2025-08-26
8524253	GC Drain Commission	2025-08-26
8619249	GC Road Commission	2025-08-26
8619102	GC Road Commission	2025-08-26
8629004-1	GC Drain Commission	2025-08-26
8630758	GC Drain Commission	2025-08-26
8629759	GC Drain Commission	2025-08-26
8629753	GC Road Commission	2025-08-26
8628501	GC Road Commission	2025-08-26
8628508	GC Road Commission	2025-08-26
8622747	GC Drain Commission	2025-08-26
8622747-1SW	GC Drain Commission	2025-08-26
8621251	GC Drain Commission	2025-08-26
5636753	City of Fenton	2025-08-28
5636034-1E	City of Fenton	2025-08-28
5636034-1W	City of Fenton	2025-08-28
5636040	City of Fenton	2025-08-28
8705752	GC Road Commission	2025-08-28
5636026	City of Fenton	2025-08-28
5636038	City of Fenton	2025-08-28
5636024	City of Fenton	2025-08-28
5636035	City of Fenton	2025-08-28
5636035-1NW	City of Fenton	2025-08-28
5636034-1S	City of Fenton	2025-08-28
5636035-1S	City of Fenton	2025-08-28
5636017	City of Fenton	2025-08-28
5623754	City of Fenton	2025-09-11
5623507	City of Fenton	2025-09-11
5626262	City of Fenton	2025-09-11
5626255	City of Fenton	2025-09-11
5626266	City of Fenton	2025-09-11
5626268	City of Fenton	2025-09-11
5623752	City of Fenton	2025-09-11



5623752-1	City of Fenton	2025-09-11
5626267	City of Fenton	2025-09-11
5626251	City of Fenton	2025-09-11
5626268-1	City of Fenton	2025-09-11
5625002	City of Fenton	2025-09-11
5625510	City of Fenton	2025-09-11
5625509	City of Fenton	2025-09-11
5636033	City of Fenton	2025-09-11
5636032	City of Fenton	2025-09-11
5625511	City of Fenton	2025-09-11
5636032-1	City of Fenton	2025-09-11
5626256	City of Fenton	2025-09-11
5625507	City of Fenton	2025-09-11
5625507-1	City of Fenton	2025-09-11
5625508	City of Fenton	2025-09-11
5625506	City of Fenton	2025-09-11
5636030	City of Fenton	2025-09-11
5636001	City of Fenton	2025-09-11
5636031	City of Fenton	2025-09-11
5623508	City of Fenton	2025-11-24
5623509	City of Fenton	2025-11-24
6621888	GC Road Commission	2025-11-24
9735501	GC Drain Commission	2025-11-24
9733752	GC Road Commission	2025-11-24
9733502	GC Road Commission	2025-11-24
9732751	GC Drain Commission	2025-11-24
8705253	GC Road Commission	2025-11-24
9732755	GC Road Commission	2025-11-24
8704502	GC Road Commission	2025-11-24
8702253	GC Road Commission	2025-11-24
9733751	GC Road Commission	2025-11-24
9733501	GC Road Commission	2025-11-24
9732255	GC Road Commission	2025-11-24
9732756	GC Road Commission	2025-11-24
8705252	GC Road Commission	2025-11-24
9732754	GC Road Commission	2025-11-24
8704503	GC Road Commission	2025-11-24
9732254	GC Road Commission	2025-11-24
9732253	GC Road Commission	2025-11-24
9732752	GC Road Commission	2025-11-24
8705251	GC Road Commission	2025-11-24
9732753	GC Road Commission	2025-11-24
8704002	GC Road Commission	2025-11-24
8704001	GC Road Commission	2025-11-24



7804755-E	City of Davison	2025-12-17
7804755-NNW	City of Davison	2025-12-17
7804755-3SSE	City of Davison	2025-12-17
7804755-3S	City of Davison	2025-12-17
7804755-1	City of Davison	2025-12-17
7804755-3SW	City of Davison	2025-12-17
7804755-2	City of Davison	2025-12-17
7804756-1	City of Davison	2025-12-19
7804756-3	City of Davison	2025-12-19
7804756-2	City of Davison	2025-12-19



**Follow up from Incident Reports from Tetra Tech  
Or illicit discharges reported from public.**

Outfall ID Owner	Location	Background and follow up inspection	Results and Comments
5602606-IDC25 EGLE	Fenton Twp Sect 02	3/25/2025 Sheen observed on water by 2358 Oakgrove Dr. Resident says this is a preserve. Strong decomp odor. Sheen is from oil dumping. Area is a regulated wetland. PEAS # 32834. EGLE did clean up.	CLOSED
5602660-IDC25 Lake Fenton Sch	Fenton Twp Sect 02	12/17/2025 EGLE emailed SH a Notice to Impacted Parties of Corrective Action form from groundwater/soil contamination caused by 2 USTs located at Lake Fenton Community Schools. This is near the GCDC Dawe Drain. School & EGLE handling.	CLOSED
5608111-IDC25 GCDC	Fenton Twp Sect 08	10/15/2025 Person stated that this is residential, but they are running a detail shop & they have concerns. MMW tried calling resident back 2x to get more details and the resident never called back or answered the phone. GCDC investigated. No issues observed.	CLOSED
5613555-IDC25 Private	Fenton Twp Sect 13	9/15/2025 Resident draining swimming pool into storm sewer. Fenton township talked with pool employee. Water had been dechlorinated.	CLOSED
5620002-IDC24 City of Linden	City of Linden Sect 20	7/09/2024 Sudsy water observed at outfall. Videoed line. GCDC-SWM & City dye tested all possible illicit locations. Found no issues.	CLOSED
5620519 City Linden	City of Linden Sect 20	9/07/2017 Outfall tested above the threshold for E. Coli and surfactants. Tetra tech tested upstream. Videoed from outfall. System much bigger than what was drawn in. Dye tested several homes. No issues found. GCDC sent 7 simple steps to businesses near structures -1A & -1.	CLOSED
5621003 GCDC	Fenton Twp Sect 21	9/14/2020 Outfall tested above the threshold for E. coli (> 2419). Tetra Tech conducted a follow-up inspection below action level. Closed Staff investigation found upstream illicit discharge 3/2/22. Outfall retested 5/28/2025. All results below action.	CLOSED



Outfall ID Owner	Location	Background and follow up inspection	Results and Comments
5625506 City of Fenton	City of Fenton Sect 25	5/24/2016 Outfall tested above the threshold for E. coli. GCDC emailed on 3/9/2022 requesting Tetra Tech to follow up on elevated E. coli observed at this outfall. Tetra Tech revisited the outfall and two upstream points on 3/14/2022. DWF was found at all three structures and samples were taken. Lab results from all samples on pipeline showed that E. Coli was below 1000 at all locations. Determined that there is no longer an issue at this outfall. EGLE requested that the outfall be revisited once more. Outfall was revisited on 7/27/2022 and field crews noted some sewage odors. While the E. coli was elevated at the site, it was below the threshold. Recommend one more revisit. 8/17/2022 Outfall tested below the threshold, but upstream structures tested above the threshold. City removed 3 illicit connections (106 5 <sup>th</sup> St, 501 3 <sup>rd</sup> St, & 508 N Lemon). Outfall retested 5/14/2025. All below threshold.	CLOSED
5626255-IDC25 City of Fenton	City of Fenton Sect 26	9/11/2025 Outfall tested above the threshold for E. coli. <b>Next Steps:</b> TT doing follow-up investigation	ONGOING
5634270-IDC25 GCDC	City of Fenton Sect 34	1/10/2025 Complaint from municipality, car wash dumping spoils/sludge in the back of property near detention pond. Dependable sewer decanting into storm drain after cleaning storage container at car wash. <b>Next Steps:</b> Downstream structure from car wash testing above the threshold for surfactants. GCDC-WWS IPP forcing car wash to do inspection on O/W separator. Car wash also did not have a IPP permit. They have since applied for one. Waiting on car wash to pay bill from water testing.	ONGOING
5636031-IDC25 City of Fenton	City of Fenton Sect 36	9/11/2025 Outfall tested above the threshold for E. coli (>2419.6 CFU/100ml) <b>Next Steps:</b> TT revisit & rescreen	ONGOING



Outfall ID Owner	Location	Background and follow up inspection	Results and Comments
5636040 City of Fenton	City of Fenton Sect 36	8/24/2022 Outfall sample has an odor. The outfall was given a status of revisit site to double check. The site was revisited, and the odor remained. The odor was no longer detected at 5636040-3. At structure 5636040-4, A floatable was observed in the bottom of the structure. Photos and notes about the floatable were reviewed and it could not be identified. Structure revisited 2/27/2025. No odors or floatables observed. Issues attributed to fire at 113 Mill St in 2022.	CLOSED
6501105-IDC22 GCDC	City of Swartz Creek Sect 1	10/25/2022 Outfall tested above the threshold for E.coli and Ammonia. 11/10/2022 outfall again tested above the threshold for Ammonia and E.coli. On the day of the visit, no upstream structure/pipe had DWF. 2 homes dye tested and no issues found. Videoed line, no tap ins were observed. No issues at upstream outfall. <b>Next steps:</b> Outfall retested 4/28/2025. Ammonia below threshold but E. coli at 1,300 CFU/100ml. Revisit outfall & upstream structure -2 to see if ammonia is still low. E. coli could be from critters	ONGOING
6502454-IDC22 GCDC	City of Swartz Creek Sect 2	8/3/2022 Outfall tested above the threshold for E. coli and ammonia. 8/16/2022 Outfall & upstream structures were revisited. The structures on Fairchild rd. were paved over and sealed shut. They were perforated and could see that there was standing water in every structure upstream. The results showed that the ammonia and surfactants were above the threshold. Videoed from Fairchild/Ingalls intersection to outfall. Dye tested all taps. No issues found in storm. <b>Next Steps:</b> Retest outfall & Ingalls/Fairchild intersection to see if issue could be from road lateral or further upstream.	ONGOING
6604222-IDC25 GCDC	Mundy Twp Sect 04	7/30/2025 Illicit connection from tri-sink to Howland Open Drain. Illicit connection found 9/4/2025 & removed 11/13/2025	CLOSED
6613512-IDC24 GCDC	Mundy Twp Sect 13	6/12/2024 Outfall tested above the threshold for E. Coli. Retested outfall on 7/22/24, 8/22/24, & 4/28/25. All tests below threshold. 7 simple steps pamphlets given to resident on community board.	CLOSED



Outfall ID Owner	Location	Background and follow up inspection	Results and Comments
6621888-IDC24 GCDC	Mundy Twp Sect 21	12/27/2024 Grey water and suds discharging from house lead. Found while crew was doing preventative maintenance in subdivision. Dye tested 4231. Found no issues.  <b>Next steps:</b> 4223 Drake Drive will not allow GCDC inside. Tap in basin coming from 4223. Having Tetra Tech test water in basin for surfactants.	ONGOING
6703256-IDC23 GCDC	Grand Blanc Twp Sect 3	6/8/2023 Outfall tested above the threshold for E. coli (2,419.6 CFU/100ml). Retested 5/12/2025 above the threshold for E. coli.  <b>Next Steps:</b> GCDC Locate -5 & -7. Tt Revisit and go upstream (-4, -5, & -6)	ONGOING
6704008-APT GCDC	Grand Blanc Sect 4	7/29/2021 Owner Called because basement apartment flooded. GCDC video'ed storm. Owner difficult to contact to arrange dye test. 8/31/2021. Confirmed 2 of 4 buildings had floor drains connected to storm. Trying to contact owner for confirmation of floor drains being connected. 2025: above is what has been documented but not sure if this issue was ever resolved. EU & MMW revisited 4/17/2025. Found 2 floor drains connected to sump. 5/1/2025 Owner capped off 2 floor drains at 3043. No issues observed at 3033 during 2025 inspection.	CLOSED
6705018-IDC24 GCDC	Grand Blanc Twp Sect 05	5/6/2024 Outfall tested above the threshold for E. coli. GCDC went to video this line and noticed that most of the lids are paved over.  <b>Next Steps:</b> GCDC working with GCRC to uncover basin lids to continue videoing. This will be done in spring 2026	ONGOING
6705300-IDC25 Grand Blanc Twp	Grand Blanc Twp Sect 05	11/17/2025 Illicit connection found from GB Twp fire station 1 interior trench drain (washing area).  <b>Next Steps:</b> GB Twp will notify GCDC when corrected. Anticipated correction in April 2026	ONGOING
6707222-IDC25 GCRC	Grand Blanc Twp Sect 07	3/12/2025 Tree Co dumping some kind of oil substance into catch basin. GCRC cleaned up. Sent Tree Co letter.	CLOSED



Outfall ID Owner	Location	Background and follow up inspection	Results and Comments
6707547-IDC25 GCRC	Grand Blanc Twp Sect 07	4/24/2025 Concrete washout by Waldorf doing work for GCDC-SWM. SWM sent maintenance out to clean out basin. Photos taken.	CLOSED
6707600-IDC25 GCRC	Grand Blanc Twp Sect 07	9/15/2025 Neighbor leaves a car parked on the road that is leaking oil into GCRC storm which drains to SWM drain. GCDC investigated. No sheen or odor in storm. Oil stain is present on road. Forwarded to GCRC & EGLE.	CLOSED
6715270-IDC25 C of Grand Blanc	C of Grand Blanc Sect 15	10/7/2025 Resident alerted City that the water in Thread Creek is brown like coffee w/cream behind Applegate Sub on Perry & Genesee. GCDC investigated. Upstream construction dewatered trench to install water main. City talked to them and a silt fence was installed.	CLOSED
6720751-IDC22 6720751-3 GCDC	Grand Blanc TWP Sect 20	6/22/2022 Outfall tested above the threshold for Surfactants. An upstream investigation found suds and sewage odors in the coming pipe at structure 6720751-3. 2 illicit connections corrected. TT retested 8/22/2024 & 1/27/2025. All below threshold.	CLOSED
6720777-IDC25 EGLE	Grand Blanc Twp Sect 20	4/25/2025 Curtic Excavating dumped dirt into the community owned wetland. This is within a regulated wetland. Forwarded to EGLE & WWS. No effect on GCDC drain.	CLOSED
6722003-IDC21 GCRC	Grand Blanc Twp Sect 22	6/08/2021 Outfall tested above threshold for ammonia. Outfall revisited on 1/27/2025. No flow present. Retested outfall 5/28/2025. All below threshold.	CLOSED
6726888-IDC25 Private	Grand Blanc Twp Sect 26	7/16/2025 Neighbor hired contractor to do courtyard work & dumped concrete in the drain. Concrete observed in driveway but no grey water observed in drain.	CLOSED
6728007-IDC22 GCDC	Grand Blanc Twp Sect 28	6/01/2022 The outfall is along the freeway and only the upstream structures 6728007-1, 6728007-2 and 6728007-3 were visited. The pipe coming in from the North at 6728007-1 tested above the threshold for surfactants. The upstream structure 6728007-3 was screened but not sampled. Based on the drain drawings, there are no additional structures upstream of 6728007-3. Based on aerial imagery, it looks like there are 2 businesses upstream, a church, and one or two residential homes. 3/13/24 Sent out dye test letters. Removed illicit connections at 8329 Embury & 8423 Embury. Retested 5/12/2025 & 8/5/2025. All below threshold.	CLOSED



Outfall ID Owner	Location	Background and follow up inspection	Results and Comments
7501777-IDC25 GCRC	Clayton Twp Sect 01	5/13/2025 Concrete company dumped down the storm drain. Concrete now in GCDC line. GCDC sucked out both basins on 5/16/2025.	CLOSED
7513305-IDC23 GCRC	Clayton Twp Sect 13	1/13/2023 Complaint from resident about soapy/glittery looking substance coming off new roof. 3/13/2024 Investigated and found what looked like suds at base of rain spout and in catch basin. Asked Jenna to test 7618009 to see if it had high surfactants and to see if it was going to our drain <b>Next Steps:</b> Manager followed through on all TT/GCDC recommendations. TT needs to revisit and take another sample to see if it decreased the surfactants.	ONGOING
7604004-IDC21 GCRC	Flint Twp Sect 4	11/17/2021 Sheen present on outfall visit, revisit needed. <b>Next Steps:</b> On TT revisit list. MMW verified outfall location and upstream structures for TT. Sheen was observed at -1 but this structure is not on the main line.	ONGOING
7605444-IDC25 GCDC/GCRC	Flint Twp Sect 05	5/15/2025 Bottle of oil discarded on W side of bridge near Linden & Flushing intersection is now leaking onto pavement. Unknown chemical & bottle triple bagged and disposed of in dumpster.	CLOSED
7610001-IDC25 GCDC	Flint Twp Sect 10	3/13/2025 Strong bleach/chemical odor at outfall, gray/greenish looking water. Tracked to C of Flint water main break at Sloan & Raskob intersection. C of Flint confirmed fixed.	CLOSED
7627501-IDC25 Private	Flint Twp Sect 27	3/4/2025 RR staff observed sheen and diesel odor in ditch on property. 1 time thing. EGLE communicating with RR staff that will be keeping an eye out.	CLOSED
7631252-IDC17 GCDC	City of Swartz Creek Sect 31	10/12/2017 Outfall tested above the threshold for E. Coli and was not followed up on. Verified that there is only 1 outfall at this site (was drawn in wrong). Outfall retested 5/28/2025 & 6/11/2025. All below threshold.	CLOSED



Outfall ID Owner	Location	Background and follow up inspection	Results and Comments
7633511-IDC22 GCDC	Flint Twp Sect 33	7/28/2022 Outfall tested above threshold for ammonia 2x, recycle company nearby. 3/12/2024 Order video from outfall to 7633511-2. <b>2025:</b> Tap in observed coming from 4520 Linden Creek Parkway. Removed fallen headwall from in front of outfall. Unburied and raised first upstream structure. Dye tested 4520. No issues observed other than some floor drains were not draining. Tap in into GCDC pipe confirmed to be downspouts. <b>Next Steps:</b> Justin (EGLE) will be doing a site visit the next time he is in the Flint area.	ONGOING
7702002-IDC24 GCDC	C of Burton Sect 02	8/26/2024 Outfall tested above the threshold for E. Coli. <b>Next Steps:</b> Retested and found issues coming from Thom St & Melody Lane. GCDC conducting dye testing. No issues found so far.	ONGOING
7702767-IDC24 GCDC	C of Burton Sect 02	8/22/2024 Outfall tested above the threshold for E. Coli. Dye tested 2228 Crestline, 2139 & 2159 N Belsay and found no issues. Outfall & upstream retested. All below threshold. Suspect wildlife is the cause.	CLOSED
7703251-IDC24 GCDC	C of Burton Sect 03	10/22/2024 Outfall tested above the threshold for surfactants. <b>Next Steps:</b> TT retested 8/5/2025. All below action. Revisit again.	ONGOING
7710754-IDC24 GCDC	C of Burton Sect 10	8/22/2024 Outfall tested above the threshold for E. coli. <b>Next Steps:</b> GCDC sent dye test letter to 4245 E Court St. Waiting on response.	ONGOING
7710888-IDC25 C of Burton	C of Burton Sect 10	4/7/2025 Water coming up through floor drains during large rain. Possible illicit connection. Illicit connection found at 1092 from 2 floor drains to sump on 4/25/2025. GCDC called or texted resident on 5/6/2025, 6/9/2025, 9/5/2025, 10/13/2025, & 1/21/2026 and never received documentation of fix. Forwarded to Burton to enforce correction.	CLOSED



Outfall ID Owner	Location	Background and follow up inspection	Results and Comments
7714003 GCDC	C of Burton Section 14 Raymond St	12/09/2021 Outfall tested above the threshold for E. coli. Tetra Tech performed follow-up testing upstream. Working on Dye testing to determine connection(s). 3/12/2024 Some dye testing done. Resend letters that never responded.  <b>Next Steps:</b> 5144 dye tested. Needs to reroute water softener and put cap in floor drain. Tried multiple times to contact them. C of Burton conducting sump pump inspections in this area. They will let me know when they do this house and correct the issue.	ONGOING
7714016-IDC24 GCDC	C of Burton Sect 14	6/12/2024 Outfall tested above the threshold for E. Coli. Dye tested 5152 & 5176 Kendall Dr. No issues found. No issues found. <b>Next Steps:</b> WO 2025-0613 after complete, TT needs to rescreen.	ONGOING
7714520-IDC23 City of Burton	C of Burton Sect 14	8/10/2023 Outfall tested above the threshold for surfactants and E. Coli. GCDC made maintenance agreement with Burton. GCDC went to video line and found buried basin. Burton unburied basin. <b>Next Steps:</b> GCDC marked basin lid to return and continue video but unable to lift lid. GCDC is asking Burton to crack lid so we can continue video.	ONGOING
7715261-IDC24 GCDC	C of Burton Sect 15	10/22/2024 Outfall tested above the threshold for surfactants & E. Coli. <b>Next Steps:</b> TT revisit & go upstream in spring 2026	ONGOING
7715757-IDC24 GCDC	C of Burton Sect 15	6/12/2024 Outfall tested above the threshold for E. Coli. Videoed pipe and observed 4 tap ins. Dye tested 1352 Amy & 4406 Springfield. Found no illicit connection. Unknow where pipes are connected. <b>Next Steps:</b> TT revisit and rescreen outfall spring 2026	ONGOING



Outfall ID Owner	Location	Background and follow up inspection	Results and Comments
7715761-IDC24 GCDC	C of Burton Sect 15	6/12/2024 Outfall tested above the threshold for E. Coli. Dye tested homes at the end of Amy St before Lippincott. No illicit connections found. Videoed whole drain looking for tap ins and staining. A dead animal was found in storm and removed. Outfall retested 5/27/2025 and tested above the threshold for surfactants. GCDC & Burton conducting dye testing/sump inspections on taps found. <b>Next Steps:</b> Burton found and eliminated illicit connection from 1445 Amy St. All other homes have been inspected by Burton. Tt add to rescreen list.	ONGOING
7717880-IDC25 MDOT	City of Flint Sect 17	6/17/2025 Sewage odor detected inside storm basin. GCRC reported due to sink hole. No odor detected during inspection, but we got heavy rain that day. Forwarded info to MDOT & C of Flint	CLOSED
7729758-IDC22 C of Burton	C of Burton Sect 29	10/05/2022 Outfall tested above the threshold for ammonia. Videoed pipe and found multiple tap ins. Dye tested 2490 & 2512 E Bristol Rd., 4040 Dort Hwy. Found no issues. <b>Next Steps:</b> Smoke test in spring 2026	ONGOING
7801444-IDC25 Private	C of Burton Sect 01	6/27/2025 Resident at 2418 Wisper Ridge told Dave that suds come out of this pipe frequently. TT tested for surfactants. No surfactants detected.	CLOSED
7803503-IDC23 City of Davison	City of Davison Sect 03	5/30/2023 Outfall tested above the threshold for ammonia, surfactants, & E. coli. The City found (3/27/25) and eliminated (5/12/25) an illicit connection from 714 N Lapeer Rd. Tt retested storm and results showed elevated surfactants. City conducted dye testing on 10 other homes and found no issues. <b>Next Steps:</b> Tt, City, & GCDC setting up a meeting to discuss next steps	ONGOING (CITY OF DAVISON HANDLING)
7804756-IDC23 City of Davison	City of Davison Sect 04	7/26/2023 Outfall tested above the threshold for ammonia & E. coli. GCDC went out and found taps in basins from 830 Moore St, 828 Moore St., & 918 Village. The City dye tested 918 & 828 and found no issues. <b>Next Steps:</b> The City will be dye testing 830.	ONGOING (CITY OF DAVISON HANDLING)



Outfall ID Owner	Location	Background and follow up inspection	Results and Comments
7810046-SAN City of Davison	City of Davison Sect 10	7/5/2025 Outfall tested above the threshold for E. Coli. Dye tested all homes with taps and found no issues.  <b>Next Steps:</b> Waiting on City to send video of storm & sanitary lines so that TT and GCDC can watch.	ONGOING (CITY OF DAVISION HANDLING)
7816265-IDC25 GCDC	Davison Twp Sect 16	6/25/2025 PEAS # 33864 fuel odor in storm drain. Boom placed. EGLE revisited 7/15 & 7/24. Found no further issues. One time discharge.	CLOSED
7816501-IDC22 GCDC	Davison Twp Sect 16	6/25/2022 Outfall tested above the threshold for ammonia. Needs to be revisited and an upstream investigation done to narrow down the source. This outfall was revisited and an upstream investigation was done. On the revisit, lower levels of ammonia were detected at the outfall however upstream at structure 7816501-4, in the pipe from the south, the level of E.coli in the sample exceeded the threshold. There are 10 homes upstream of this structure and it is recommended that they be dye tested. Outfall retested 6/3/2025 & 8/5/2025. All below threshold.	CLOSED
8501599-IDC25 EGLE	Flushing Twp Sect 01	3/10/2025 Sewage flowing overland into a storm sewer within a trailer park. Forwarded to State. Sewer pipe replaced.	CLOSED
8504700-IDC24 GCDC	Flushing Twp Sect 04	8/05/2024 Fabric softener odor in basin in front of home. Complainant blamed 10390 W Mt Morris Rd. GCHD inspected this home & sent GCDC documentation. Outfall tested for surfactants, ammonia, & E. coli. All below threshold.	CLOSED
8512255-IDC25 GCRC	Flushing Twp Sect 12	8/26/2025 Suds present at the end of the pipe. No sample taken (trace, insufficient to sample)  <b>Next Steps:</b> TT revisit & rescreen	ONGOING



Outfall ID Owner	Location	Background and follow up inspection	Results and Comments
8515754-IDC25 GCDC	Flushing Twp Sect 15	6/18/2025 Outfall tested above the threshold for surfactants <b>Next Steps:</b> Tt traced upstream. Revisit again before dye testing or videoing	ONGOING
8522254-IDC25 GCDC	Flushing Twp Sect 22	6/2/2025 Outfall tested above the threshold for E. coli. E. coli coming from south pipe. Asked inspector MW to go out and look for taps in K cover and locate outfall. If there are taps in basin, dye test based on direction. If no taps, clean line and retest. 2 taps are present. <b>Next Steps:</b> Dye test 9011 & 9009 Saddle Horn Dr	ONGOING
8522508-IDC25 GCDC	Flushing Twp Sect 22	6/30/2025 All tests below action. Suds that do not appear naturally occurring were present <b>Next Steps:</b> Tt revisit & rescreen	ONGOING
8527701-IDC23 GCDC	City of Flushing Sect 27	4/13/2023 Outfall tested above the threshold for E. Coli. Videoed storm (no tap ins) and sanitary (no issues observed). Looked for old documentation of septic tanks. Dye tested all homes around storm (no issues found). <b>Next Steps:</b> Per conversation with EGLE, GCDC working with maintenance to install critter guard and then clean/retest outfall	ONGOING
8534011-IDC25 City of Flushing	City of Flushing Sect 34	10/2/2025 Milky light brown water in Cole Creek flowing N. Resident noticed the increase in flow & this is the 2 <sup>nd</sup> time this has been observed. City of Flushing water main break on Lynn St. Revisited and documented fix. This had happened a 2 <sup>nd</sup> time just recently.	CLOSED
8605751-IDC23 GCDC	Mt Morris Twp Sect 05	5/18/2023 Bleach odor in basin in rear yard (8171 Linden Rd). Residents' sump line is in structure. <b>Next Steps:</b> Dye tested 8171 and found no issues. WO 2025-0016 Video pipe that runs behind home. WO still in stack	ONGOING



Outfall ID Owner	Location	Background and follow up inspection	Results and Comments
8613333-IDC24 GCDC	Mt Morris Twp Sect 13	10/29/2024 Confirmed sanitary emergency valve from Beecher Metro. Tyrone (Beecher Metro) told GCDC it would be removed by spring 2025. Documentation provided by Beecher Metro on 3/19/2025 of correction.	CLOSED
8613700-IDC25 GCDC	Mt Morris Twp Sect 13	9/9/2025 Parcel owners (1365, 1340, 1358 Flamingo Dr) called township and complain that during heavy rainwater comes up through floor drains/sump. GCDC did dye test at 1365 & 1358. No issues found. 1340 inspected by Beecher. No issues found.	CLOSED
8621751-IDC25 GCDC	Mt Morris Twp Sect 21	6/30/2025 Outfall tested above the threshold for E. coli (1,300 CFU/100 ml) <b>Next Steps:</b> Tt revisit & rescreen	ONGOING
8622252-IDC25 Mt Morris Twp	Mt Morris Twp Sect 22	2/3/2025 Pump shutoff failed; pump poured out ~300 gal of gas. Township handled clean up.	CLOSED
8622749-IDC24 GCDC	Mt Morris Twp Sect 22	7/2/2024 Laundry soap in basin in front of 5136 Judith Ann. Illicit connection confirmed. Twp had a contractor that did the work for a low price. Contract missed 3 <sup>rd</sup> floor drain. <b>Next Steps:</b> GCDC requested contractor return to cap 3 <sup>rd</sup> floor drain but resident dodging calls, emails, and ignoring when he comes to the residence. Contractor is working with his lawyer to finish work and get payment for work completed.	ONGOING
8628508-IDC25 GCRC	Mt Morris Twp Sect 28	8/26/2025 Outfall tested above the threshold for surfactants. <b>Next Steps:</b> TT revisit & rescreen outfall/upstream structures	ONGOING
8629772-IDC25 GCDC	Mt Morris Twp Sect 29	8/26/2025 Outfall tested above the threshold for surfactants <b>Next Steps:</b> TT revisit & rescreen outfall/upstream structures	ONGOING
8630758-IDC25 GCDC	Mt Morris Twp Sect 30	9/17/2025 Hose draining from hunting blind to catch basin. GCDC sent letter to resident to remove connection. Hose rerouted to ground. Illicit removed.	CLOSED



Outfall ID Owner	Location	Background and follow up inspection	Results and Comments
8633751-IDC25 GCDC	Mt Morris Twp Sect 33	8/26/2025 All tests below action. Sheen in water that swirls back together is present. Sheen forms lots of bubbles when agitated. <b>Next Steps:</b> TT revisit & rescreen.	ONGOING
8706506-IDC25 C of Mt Morris	C of Mt Morris Sect 06	8/25/2025 Outfall tested above the threshold for E. coli & surfactants. <b>Next Steps:</b> TT revisit & rescreen outfall/upstream structures	ONGOING
8713002-IDC22 GCRC	Genesee Twp Sect 13	6/10/2025 Outfall tested above the threshold for E. coli & surfactants. Rescreened on 8/25/2025 and had standing water. <b>Next Steps:</b> TT revisit and retest 1 more time.	ONGOING
8717222-IDC25 Genesee Twp	Genesee Twp Sect 17	12/5/2025 Discharge into a wooded roadside area of diluted raw sewage from home in the force main from pump station occurred on 12/4/2025 at 10:00AM. Discharge ended 12/4/2025 at 12:30PM. Lime spread. Not near a storm drain.	CLOSED
8720508-IDC25 GCDC	Genesee Twp Sect 20	6/12/2025 All tests below action but during screening, flow increased and suds present. <b>Next Steps:</b> TT revisit and rescreen	ONGOING
8726222-IDC25 GCDC	Genesee Twp Sect 26	8/21/2025 Neighbor releasing sanitary into storm drains. 5029 Rossway has all interior plumbing cross connected to sump. Removed root mass from sanitary lead and now sanitary is draining to the sanitary system but cross connection still exists. There is no legal way for Twp to enforce a fix that can't be proven. Twp will be keeping an eye out. <b>Next Steps:</b> Double check that this resident plugged the floor drain. Then close.	ONGOING
8726503-IDC24 GCDC	Genesee Twp Sect 26	6/13/2024 Outfall tested above the threshold for E. coli. Upstream heads towards a life station. Videoed and no tap ins between 1 <sup>st</sup> upstream structure and outfall <b>Next Steps:</b> 8/27/2025 Put a hold on this case until GCDC-SWM can correct complaint #8726222-IDC25 illicit connection	ONGOING



Outfall ID Owner	Location	Background and follow up inspection	Results and Comments
8726516-IDC25 GCDC	Genesee Twp Sect 26	6/4/2025 Unable to access outfall. Upstream (-1) has a significant sewage odor. All tests below action. <b>Next Steps:</b> TT revisit and retest	ONGOING
8727759-IDC17 GCDC	Genesee Twp Sect 27	7/21/2017 Outfall tested above the threshold for E. coli. Videoed storm and found multiple tap ins. GCDC conducted dye testing at 5022, 5030, & 5038 Esta Dr and found no issues. <b>Next Steps:</b> GCDC will continue dye testing up Esta Dr. (5044, 5052, 5060, 5066 & 5088)	ONGOING
8733002-IDC24 GCDC	Genesee Twp Sect 33	7/29/2024 Outfall tested above the threshold for E. coli. Retested on 6/10/25 below action. Retested on 8/25/25 above E. coli threshold. Wrote WO to clean storm. <b>Next Steps:</b> WO complete. TT retest.	ONGOING
8733251-IDC24 GCRC	Genesee Twp Sect 33	7/29/2024 Outfall tested above the threshold for surfactants & E. coli. Drains lines drawn in oddly. GCDC is not sure where drainage is coming from. <b>Next Steps:</b> GCDC do exploratory videoing to see where drain stops to properly conduct dye testing	ONGOING
8734756-IDC24 GCRC	Genesee Twp Sect 34	7/29/2024 Outfall tested above the threshold for surfactants Outfall has tested below the threshold 2x (6/10/2025 & 8/25/2025) <b>Next Steps:</b> TT retest one more time	ONGOING



Outfall ID Owner	Location	Background and follow up inspection	Results and Comments
8734757-IDC24 GCRC	Genesee Twp Sect 34	<p>7/29/2024 Outfall tested above the threshold for E. Coli &amp; surfactants. The is an environmental contamination site. 2 LUSTs (4519 &amp; 4522 Richfield). TT recommended the Rite Aid get tested, but it has been closed, and no water is being used.</p> <p><b>Next Steps:</b> TT sound test to verify upstream structures &amp; retest/ go upstream in spring 2026</p>	ONGOING
8818766-IDC25 GCDC	Richfield Twp Sect 18	<p>10/23/2025 After finishing repair on basin &amp; restoring flow, a strong sewage odor presented in storm. No issues observed on 10/24/2025.</p> <p><b>Next Steps:</b> Waiting on DR to write WO to clean drain before asking TT to test outfall for E. coli.</p>	ONGOING
8833016-IDC24 GCDC	Richfield Twp Sect 33	<p>8/12/2024 Outfall tested above the threshold for surfactants. TT has revisited 2x (10/24/2024 &amp; 11/13/2024), both times under threshold. Retested 1 more time (5/12/2025). All below threshold.</p>	CLOSED
8833700-IDC25 GCDC	Richfield Twp Sect 33	<p>8/21/2025 Flooring epoxy spilled in roadway on 8/12/2025. Epoxy is now dry. No epoxy or odor in nearest drain. EGLE talked to HOA.</p>	CLOSED
9608967-IDC24 GCDC	Vienna Twp Sect 08	<p>11/19/2024 Outfall tested above the threshold for surfactants. Dye tested 18 homes with taps on the site plan. No issues found.</p> <p><b>Next Steps:</b> Dye test 1 more home (5112 Old Barn Lane) that has a tap that was not on the site plan.</p>	ONGOING



Outfall ID Owner	Location	Background and follow up inspection	Results and Comments
9615509-IDC23 City of Clio	City of Clio Sect 15	7/18/2023 Outfall tested above the threshold E. Coli. Pipe drawn in incorrectly. City provided as built but plans only had ½ the drain. Dye tested 3450 & 3430 W Vienna Rd and found no issues.  <b>Next Steps:</b> Waiting on the City to verify the rest of the drain either with site investigation or finding the rest of the plans.	ONGOING
9615509-IDC25 City of Clio	City of Clio Sect 15	8/1/2025 Milky white substance going into creek (Pine Creek natural watercourse). Employees at 901 Tacoma Ct washed chemical containers in parking lot and dumped down storm. TES placed, removed, & disposed of boom properly.	CLOSED
9616502-BUB 9616502-IDC22 GCDC	Vienna Twp Sect 16	7/6/2021 Tetra Tech found high surfactants at outfall 4/26/2022 Property owner complaint of gas 3/4/2024 GCDC went out to 4239 W Vienna Road to do dye test but found no connection. Fuel odor still present. Sheen in some basins. 3/27/2024 Found 1 tap in coming from Randy Wise. 07/09/2024 Old LUST at Randy Wise (old Action Auto). 1/14/2025 EGLE preformed water sampling at existing monitoring wells. 1 did test above threshold which is near GCDC drain. <b>Next Steps:</b> Clinton Sweet (EGLE) working with dealership owner to drill more monitoring wells and the legality of the petroleum contamination from soil getting into the storm drain	ONGOING
9618230-IDC25 GCDC	Vienna Twp Sect 18	12/17/2025 Neighbor has 55-gallon drums & 500-gallon fuel/oil tank on its side within 20 ft of the County drain. Unsure if there is anything in them. Concerned about possible leak. GCDC investigated. Drums are present but no odor or sheen observed in drain. Drums are empty.	CLOSED
9623222-IDC25 GCDC-WWS	City of Clio Sect 23	10/13/2025 Sanitary overflow on 10/12/2025. WWS handled clean up (spread lime dust). Water tested. E. coli level below action.	CLOSED



Outfall ID Owner	Location	Background and follow up inspection	Results and Comments
9623509-IDC21 GCDC	Vienna Twp Sect 23	7/06/2021 Outfall tested above threshold for surfactants during dry weather testing. Videoed and found some tap ins but pipe was off set, so we were unable to complete the video. Dye tested 11081-11025 Clio Rd and found no connections. Verified connection between corner basin and outfall.  <b>Next Steps:</b> WO 2025-0630 Video all pipes between NW corner of Clio & W Wilson to top of line looking for tap ins. Jet & vac all structures. Waiting on TJ to make map with new structure names.	ONGOING
9626008-IDC25 GCDC	Vienna Twp Sect 26	7/30/2025 Outfall tested above the threshold for E. coli (2,419.6 CFU/100ml) <b>Next Steps:</b> Tt revisit & screen	ONGOING
9715233-IDC25 GCHD	Thetford Twp Sect 15	6/30/2025 Septic system drains to ditch which drains to Dead Creek. GCDC investigated and forwarded to GCHD. GCHD found no issues.	CLOSED
9719003-IDC25 GCRC/EGLE	Thetford Twp Sect 19	3/31/2025 Fuel/oil odor coming up through sump pump. Resident had small fuel spill on outside wall of sump pump. Resident replaced sump. No issues since. Will contact EGLE if issue comes back.	CLOSED

Of 499 new dry weather screenings in this reporting cycle, there were 16 that resulted in follow up



IDEP Change / Add / Delete form

Date 6-25-2025

Current Conditions

Structure # 5623507

Owner C of Fenton

☒ Change

☐ Addition: New # \_\_\_\_\_

☐ Delete

Explanation: Tetra Tech was unable to locate  
outfall in 2018. GCDC investigated. Outfall  
located on E side of Blue Heron Dr. Verified  
upstream drainage.

Changed in GIS

☒ Storm Line

☒ Municipal line

☒ Municipal Outfall + Outfalls 2023-on

☒ Scanned to IDEP Files

K:\Stormwater Management\Archive- Scanned Documents\Programs\IDEP

☒ Changed on MI WATERS

Date Emailed to City (SG/DB)  
12/3/25

☒ Tetra Tech

SCANNED





Before









NW

N

NE

300

330

0

30

60

☀ 2°N (T) LAT: 42.817148 LON: -83.719905 ±16ft ▲ 875ft

04 Jun 2025, 12:36:29



IDEP Change / Add / Delete form

Date 6-25-2025

Current Conditions

Structure # 5623508

Owner C of Fenton

☐ Change

☒ Addition: New # 5623508

☐ Delete

Explanation: Found during inspection of  
drainage to outfall #5623507. Verified  
structure locations and outfall size with the City.  
12" concrete

Changed in GIS

☒ Storm Line

☒ Municipal line

☒ ~~Municipal Outfalls~~ 2023-on

☒ Scanned to IDEP Files

K:\Stormwater Management\Archive- Scanned Documents\Programs\IDEP

☒ Changed on MI WATERS

Date Emailed to City (SG/DB)  
12/3/25

☒ Tetra Tech

SCANNED





Before







IDEP Change / Add / Delete form

Date 6-25-2025

Current Conditions

Structure # 5623509

Owner C of Fenton

☐ Change

☒ Addition: New # 5623509

☐ Delete

Explanation: Found during inspection of drainage  
to outfall #5623507. Verified structure locations  
and outfall size with the City.

16" concrete

Changed in GIS

☒ Storm Line

☒ Municipal line

☒ ~~Municipal~~ Outfalls 2023-on

☒ Scanned to IDEP Files

K:\Stormwater Management\Archive- Scanned Documents\Programs\IDEP

☒ Changed on MI WATERS

☒ Tetra-Tech

Date Emailed to City (SG/DB)  
12/3/25

SCANNED



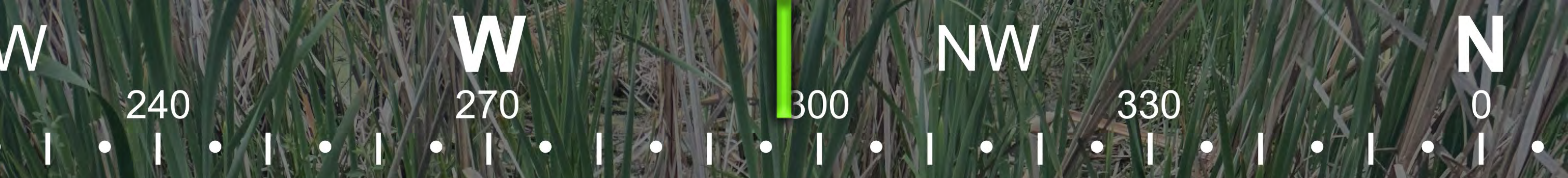


Before









☀ 297°NW (T) LAT: 42.818244 LON: -83.720125 ±9ft ▲ 875ft



04 Jun 2025, 12:39:07





☉ 296°NW (T) LAT: 42.818256 LON: -83.720142 ±9ft ▲ 874ft



04 Jun 2025, 12:39:12



IDEP Change / Add / Delete form

Date 10-10-25

Current Conditions

Structure # \_\_\_\_\_

Owner C of Grand Blanc

☐ Change

☒ Addition: New # 6715270

☐ Delete

Explanation: Outfall found during illicit investigation.  
map provided by City of Grand Blanc. See  
attached.

Changed in GIS

☐ Storm Line

☒ Municipal line

☒ ~~Municipal Outfall~~ Outfalls 2023-On

☒ Scanned to IDEP Files

K:\Stormwater Management\Archive- Scanned Documents\Programs\IDEP

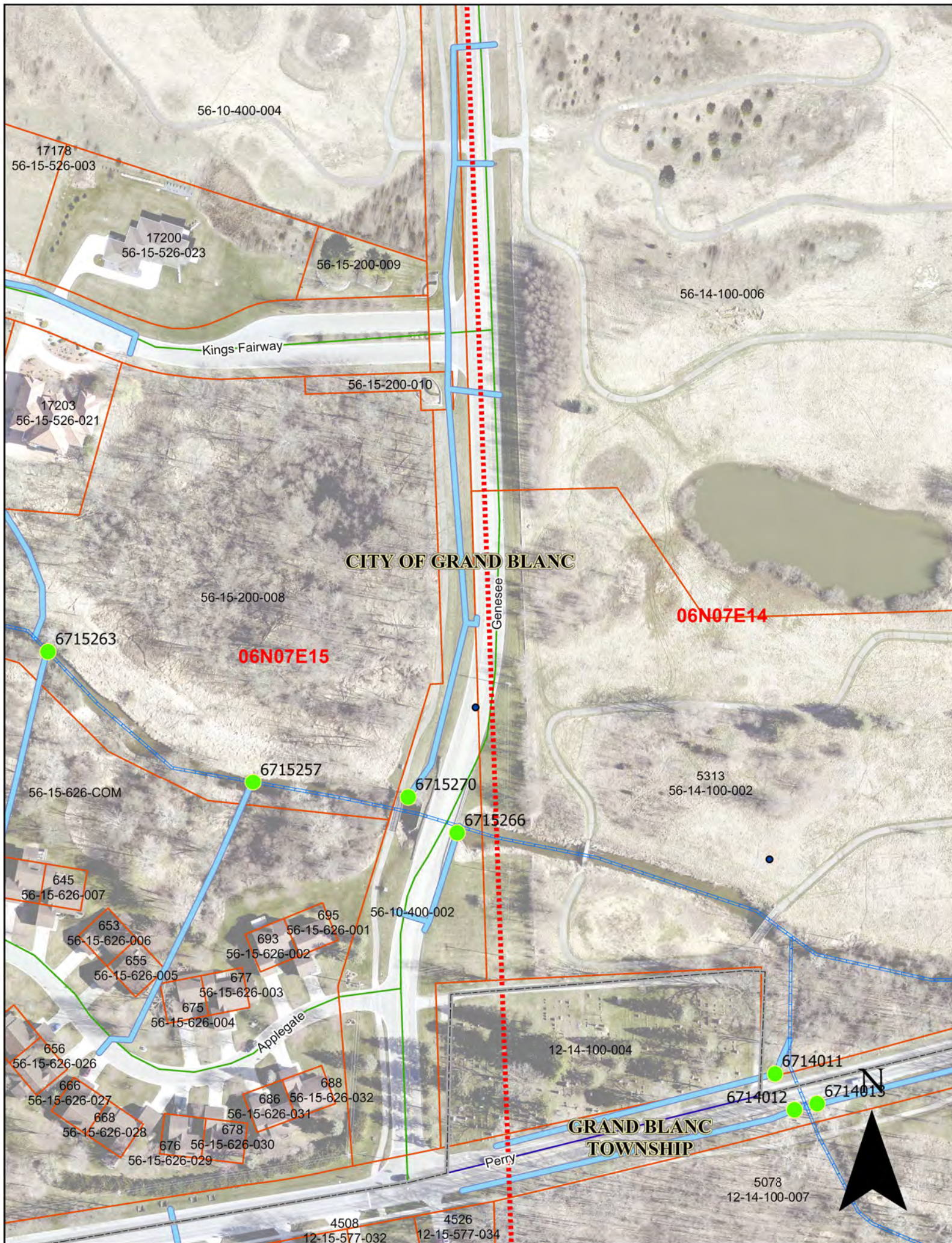
☒ Changed on MI WATERS

Date Emailed to City (mw)  
11/30/26

☒ Tetra Tech

SCANNED







# North West

☉ 324°NW (T) LAT: 42.926893 LON: -83.612558 ±6ft ▲ 838ft



08 Oct 2025, 12:14:44



# North East

☉ 49°NE (T) LAT: 42.926984 LON: -83.612796 ±29ft ▲ 823ft



08 Oct 2025, 11:59:52



# North East

☉ 33°NE (T) LAT: 42.926926 LON: -83.612767 ±45ft ▲ 795ft



08 Oct 2025, 12:07:28



# South West

☉ 207°SW (T) LAT: 42.927164 LON: -83.612596 ±13ft ▲ 823ft



First upstream structure

08 Oct 2025, 12:08:41



IDEP Change / Add / Delete form

Date 4-29-2025

Current Conditions

Structure # \_\_\_\_\_

Owner C of Burton

☐ Change

☒ Addition: New # 7710800

☐ Delete

Explanation: Outfall was found during dye test. Easement in place. In the 70s the C of Burton took over all the roads from the Road Commission. Therefore, this outfall would belong to the City of Burton.

Changed in GIS

☒ Storm Line Added

☒ Municipal line added

☒ ~~Municipal~~ Outfalls 2023-on ✓

☒ Scanned to IDEP Files

K:\Stormwater Management\Archive- Scanned Documents\Programs\IDEP

☒ Changed on MI WATERS

☒ tetra tech

Date: Emailed to City (CH)  
6/2/25

SCANNED





7710800

07N07E10

CITY OF BURTON

07N07E15

pipe continues south but not  
sure where the next structure is

N





50

S

180

SW

240

W

270

NW

300

330

☀ 245°SW (T) LAT: 43.023933 LON: -83.624394 ±9ft ▲ 762ft

25 Apr 2025, 15:32:56



## Whitkopf, Michaela

---

**From:** Whitkopf, Michaela  
**Sent:** Tuesday, January 13, 2026 3:26 PM  
**To:** Troppman, Jenna  
**Subject:** FW: 7710800 New C of Burton outfall  
**Attachments:** 7710800 Add 2025-04-29.pdf

Hey Jenna,  
Just a reminder that this outfall has not been added to the TT map.

Michaela Whitkopf  
Storm Water Compliance Assistant  
Surface Water Management Division  
810-732-1590  
mwhitkopf@geneseecountymi.gov

---

**From:** Whitkopf, Michaela  
**Sent:** Monday, June 2, 2025 2:13 PM  
**To:** Troppman, Jenna <jenna.troppman@tetrattech.com>  
**Cc:** Hogan, Susanne <shogan@geneseecountymi.gov>  
**Subject:** RE: 7710800 New C of Burton outfall

Forgot to add the attachment.

Michaela

---

**From:** Whitkopf, Michaela  
**Sent:** Monday, June 2, 2025 2:12 PM  
**To:** Troppman, Jenna <[jenna.troppman@tetrattech.com](mailto:jenna.troppman@tetrattech.com)>  
**Cc:** Hogan, Susanne <[shogan@geneseecountymi.gov](mailto:shogan@geneseecountymi.gov)>  
**Subject:** 7710800 New C of Burton outfall

Hey Jenna,  
Here is the add form for the new C of Burton outfall. I can not figure out how to add it to the TT map. We would like this tested next year since most of the C of Burton outfalls are scheduled to be tested in yr 3 or 4 & the budget is short for the City right now.

Let me know if you need more information.

Michaela



## Whitkopf, Michaela

**From:** Whitkopf, Michaela  
**Sent:** Monday, June 2, 2025 2:09 PM  
**To:** Chris D. Howser  
**Cc:** Hogan, Susanne  
**Subject:** RE: Burton Outfall  
**Attachments:** 7710800 Add 2025-04-29.pdf

Hey Chris,  
Here is a map and ADD form for the new outfall (7710800).

Per Sue,

Do NOT modify anything on MIEnviro until the 30 day review for the new permit is over & the State has approved your new permit.

Once that time frame has passed, follow the directions below.

- 1) Login to MIEnviro.
- 2) On the left-hand menu bar, go to Start a New Form → I want to renew, modify or terminate an existing permit, license or registration → NPDES Minor Modifications.

The screenshot shows the MIEnviro web application interface. On the left is a dark green sidebar with the text 'Genesee Co MS4' and a dropdown arrow. Below this are several menu items: Home, Dashboard, Notifications, Site Details, 'Start a New Form' (highlighted with a red border), Submissions, Permits, Evaluations, Violations, Compliance and Enforcement Actions, Financials, Documents, and Authorized Users. The main content area has a white background with a dark green header 'Start New Form'. Below this is a yellow box with the text 'The forms below are filtered for only those that apply to Sites.' and a 'Show All Forms' button. The main content area lists several form categories, each with a title and a description. The category 'I want to renew, modify or terminate an existing permit, license or registration' is highlighted with a yellow background. The categories are: 'I want to start a new application' (Forms used to apply for a New Permit, License, or Entrance into a Program), 'I want to renew, modify or terminate an existing permit, license or registration' (Forms used to reissue, modify, transfer or terminate a permit), 'I have a reporting obligation to fulfill' (Reporting forms relating to current permits and active compliance actions), 'I want to make a service request' (Forms used to make a service request), 'I want to file a complaint, or report an incident' (Forms to file a general complaint or to report spills, leaks or discharges), and 'I'm not sure' (Search all available forms).



Genesee Co MS4

Home

Dashboard

Notifications

Site Details

Start a New Form

Submissions

Permits

Evaluations

Violations

Compliance and Enforcement Actions

Financials

Documents

Authorized Users

Facility Ownership/Control Transfer Notification (NPDES)  
Site Name: Genesee Co MS4  
Permit Number: MI0060015 v1.1  
Form Description: Use this form to notify EGLE of a transfer of ownership or control of a permitted facility.  
Program Area: WRD - NPDES

National Pollutant Discharge Elimination System (NPDES) Municipal Separate Storm Sewer System (MS4) Application Form (Reissuance)  
Site Name: Genesee Co MS4  
Permit Number: MI0060015 v1.1  
Form Description: Municipal Separate Storm Sewer System (MS4) Application Form (Reissuance) for National Pollutant Discharge Elimination System (NPDES)  
Program Area: WRD - NPDES

NPDES Minor Modifications  
Site Name: Genesee Co MS4  
Permit Number: MI0060015 v1.1  
Form Description: This form should only be used for minor modifications to Stormwater and Standar  
NPDES Permits, COCs, or other Authorization types including ownership and name changes.  
Program Area: WRD - NPDES

NPDES Monitoring Frequency Reduction Requests  
Site Name: Genesee Co MS4  
Permit Number: MI0060015 v1.1  
Form Description: This form should only be used for monitoring frequency reductions that are specifically allowed in your NPDES Permit or COC language, generally found in Part 1.A.1., 1.A.2., etc your permit or the second paragraph of your COC.  
Program Area: WRD - NPDES

NPDES Notice of Termination (NOT)

3) Begin form entry. Fill out the form with your municipality information.



## Applicant Information

CLE

The Applicant should be the business seeking certification or certification renewal.

▶▶▶ Do NOT type the name of the individual filling out this form. Please type the company/entity name and address only.

### Permittee Information

Permittee/Company Name Auto-fill

PERMITTEE/COMPANY NAME

\* Organization Name

Phone Type

Phone Number

ADD PHONE

Email

Fax

PERMITTEE/COMPANY MAILING ADDRESS

- 4) In the Changes Requested section, explain that this outfall is new, it was found this year, and will be tested in 2026. Here is where you would add the attached document.



NPDES Minor Modifications

Submission HQD-12YN-7FX5X   Revision 1   Form Version 1.11

Permit ID

Applicant Information

Facility/Site Information

Contacts

Changes Requested

Review

Signing

Changes Requested

CLEAR

What changes are being requested? If more space is needed please upload document(s)

Documents (As needed)

Multiple files may be uploaded in this area.  
Please be aware that files exceeding 500 MB in size are not allowed

Drop files here to upload

OR

CHOOSE FILE

If you have any questions, let us know.

Michaela

**From:** Chris D. Howser <c.howser@burtonmi.gov>  
**Sent:** Tuesday, April 29, 2025 8:53 AM  
**To:** Whitkopf, Michaela <MWhitkopf@geneseecountymi.gov>  
**Subject:** RE: Burton Outfall

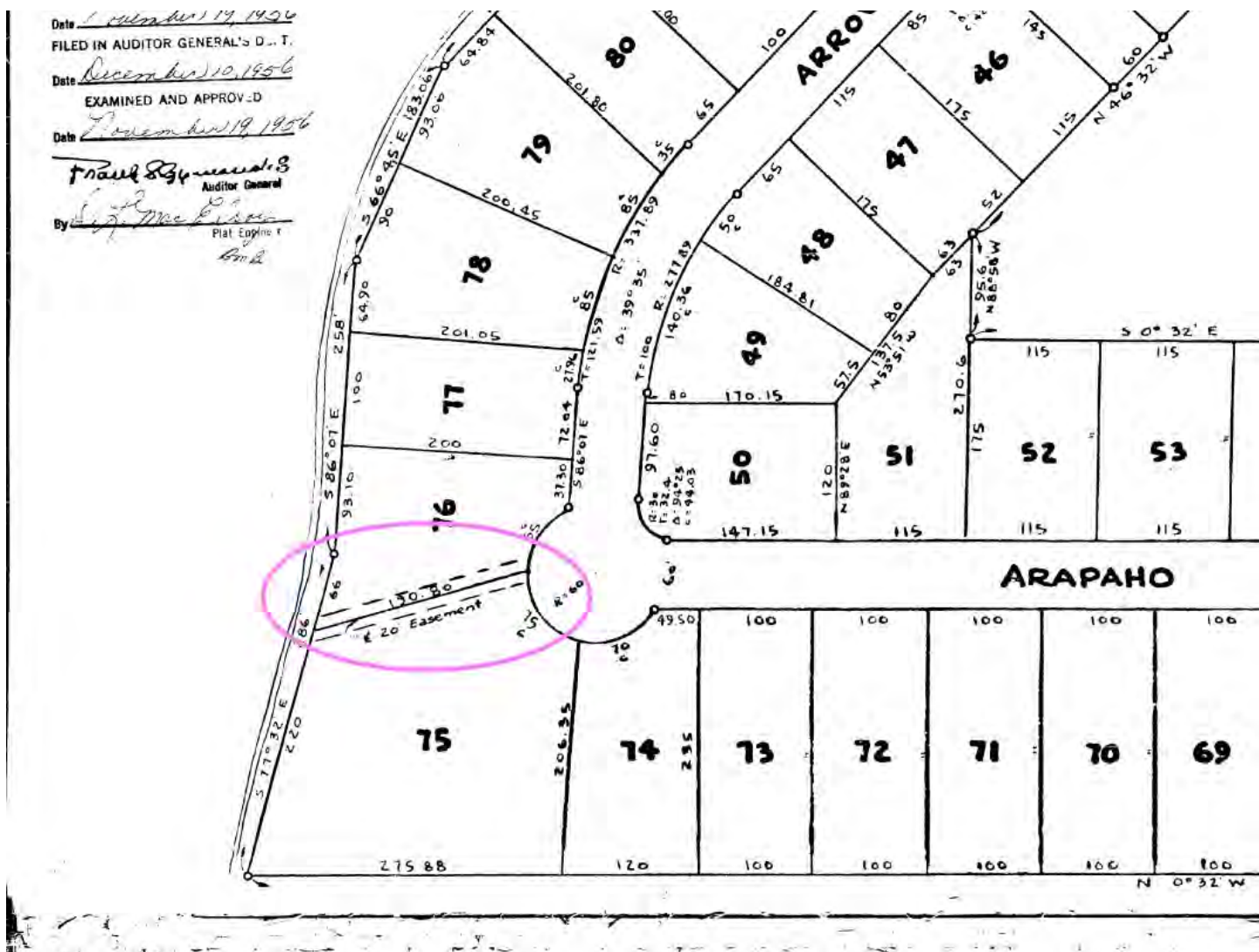
**External sender** <c.howser@burtonmi.gov>  
Make sure you trust this sender before taking any actions.

Ok, Sounds Good.

**From:** Whitkopf, Michaela <MWhitkopf@geneseecountymi.gov>  
**Sent:** Tuesday, April 29, 2025 8:44 AM  
**To:** Chris D. Howser <c.howser@burtonmi.gov>  
**Cc:** Hogan, Susanne <shogan@geneseecountymi.gov>  
**Subject:** RE: Burton Outfall

Chris,  
I see that on the one map I found as well.





However, per Sue Hogan, this outfall serves the road and back in the 70s the City of Burton took over all the roads for the road commission. Therefore, this outfall would belong to the City. I would like to add this to the dry weather screening list for this year.

Michaela

From: Chris D. Howser <[c.howser@burtonmi.gov](mailto:c.howser@burtonmi.gov)>  
 Sent: Monday, April 28, 2025 2:45 PM  
 To: Whitkopf, Michaela <[MWhitkopf@geneseecountymi.gov](mailto:MWhitkopf@geneseecountymi.gov)>  
 Subject: RE: Burton Outfall

External sender <[c.howser@burtonmi.gov](mailto:c.howser@burtonmi.gov)>  
 Make sure you trust this sender before taking any actions.

Michaela,



Our plat book shows a 25ft easement going from the street to that corner, however it does not show ownership, this is dated back in the 50s. when we were Burton Township.

---

**From:** Whitkopf, Michaela <[MWhitkopf@geneseecountymi.gov](mailto:MWhitkopf@geneseecountymi.gov)>

**Sent:** Monday, April 28, 2025 11:49 AM

**To:** Chris D. Howser <[c.howser@burtonmi.gov](mailto:c.howser@burtonmi.gov)>

**Cc:** Hogan, Susanne <[shogan@geneseecountymi.gov](mailto:shogan@geneseecountymi.gov)>

**Subject:** Burton Outfall

Hey Chris,

During our dye test on 4/25/25, Mat said that Arapaho Dr may drain to an outfall at the north end of the road, but he wasn't sure if Burton owned it or if there was even really an outfall there. He said something about a resident told him there was one that, but it was not investigated. Before we left, we investigated and found an outfall at the NE corn of lot 1171 (see attached photo). Can you investigate if this pipe is owned by Burton? It is not currently being dry weather screened because it is not on our map.

Let me know.

Michaela



## 2025 - 2026 Annual Report Information Per Community

Community	#3) # of NEW outfalls/POD DryWS	Screenings as Part of Follow Up (FYI/Info not associated with Annual Report Question)	#4) Of the NEW Outfalls/POD that had DWF	#6a) Illicit Discharges during Reporting Period	#6b) Illicit Discharges Eliminated During Reporting Period	#6c) Illicit discharges that Resulted in Enforcement Action	#6d) Illicit not Eliminated within 90 Days	Change/Add/Delete Forms
City of Burton	0	0	0	2	1	Verbal Warning (VW): 1, Notice of Violation (NOV): 1	1	1
City of Clio	0	5	0	1	1	VW: 1 NOV: 1	0	0
City of Davison	0	11	0	1	1	0	0	0
City of Fenton	62	1	10	0	0	0	0	3
City of Flushing	0	0	0	0	0	0	0	0
Flushing Township	1	0	0	0	0	0	0	0
City of Linden	1	0	1	0	0	0	0	0
City of Mt. Morris	2	0	1	0	0	0	0	0
City of Swartz Creek	0	0	0	0	0	0	0	0
Genesee County	433	148	147	11	10	VW: 2 NOV: 2	1	12
Genesee Township	0	0	0	1	1	0	0	0
City of Grand Blanc	0	0	0	1	1	VW: 1	0	1
Grand Blanc Township	0	0	0	1	0	0	1	0
Other (Private, EGLE, etc.)	0	0	0	6	0	VW: 1 NOV: 2	0	0
<b>Totals:</b>	<b>499</b>	<b>165</b>	<b>159</b>	<b>24</b>	<b>15</b>		<b>3</b>	

**The Communities with Change/Add/Delete Forms will need to submit them on MIEnviro. Submittal will be separate from the Annual Report.**