

Illicit Discharge
Elimination Program
(IDEP)

Refresher Training

As required by Part I,
Section A.3.d.3 of the MS4
NPDES Permit

Stormwater Pollution Prevention



Why Am I Taking this Training?

- If you are taking this training, you will learn
 - how to identify a potential illicit discharge or connection, and
 - The proper procedure for reporting and responding to an illicit discharge or connection
- This training is for municipal employees and contractors working for municipalities
- Training is required
 - At least once during the permit cycle (typically 5-years) for existing staff
 - New hires shall receive training within one year of their hire date

About the Permit Program

National Pollutant Discharge Elimination System (NPDES) permit program for Municipal Separate Storm Sewer Systems (MS4s)

Goal of the MS4 program is to reduce the discharge of pollutant to surface waters of the State

An MS4 is a system of drainage (including roads, storm drains, pipes, ditches, etc.) that is not a combined sewer or part of a sewage treatment plant.

Stormwater discharges from a regulated MS4 to a surface water of the State in an urbanized area are subject to regulations under the NPDES program.

Michigan Department of Environment, Great Lakes, and Energy (EGLE) regulates the MS4 permit.

What an illicit discharge is

What an illicit connection is

How to prevent them

What to do when one is discovered

Where to report issues

When you
complete
this
course,
you should
know

Municipal Separate Storm Sewer System (MS₄)

- A municipally owned system of drainage (including roads, storm drains, pipes, ditches, etc.) that is not a combined sewer or part of a sewage treatment plant.

Illicit Discharge

- Any discharge to, or seepage into, an MS₄ that is not composed entirely of stormwater or uncontaminated groundwater.

Illicit Connection

- A physical connection to an MS₄ that primarily conveys non-stormwater discharges other than uncontaminated groundwater.

Definitions

Why We Care About Illicit Discharges

- Rainwater from storm events flows to surface water bodies
- Keeping pollution out of stormwater protects rivers and lakes



What are Common Stormwater Pollutants?



Litter



Pesticides



Oils and
grease



Sewage
and grey
water



Chemicals from
landscaping, pressure
washing, auto repair,
salvage yards, etc.



Domestic
animal
waste



Improperly
disposed
household
chemicals



Soil erosion

Spotting Sources

- Dry weather flow
- Staining
- Discolored water
- Laundry smell
- Sanitary smell or debris
- Small pipes to catch basins or drains



Dry Weather Flow

- Drainage pipes should be dry if it hasn't rained recently
 - <0.10 inches of rain in the previous 72 hours
- Exception examples
 - High groundwater
 - Irrigation
 - Footing drains



What does an Illicit Discharge Look Like

- Staining
- Suds or Foam
- Smell



Laundry Connections

- Suds
- Lint
- Surfactants
- Odor



Vehicle Washing

- Residential
- Commercial
- Surfactants



Other Washing



Sewer Overflow

- Backups
- Inflow
- Cross Connections

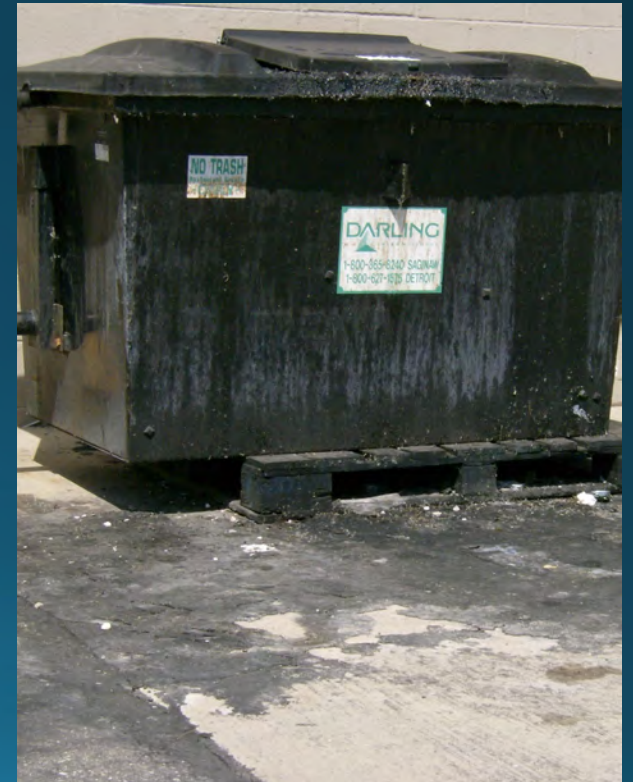


Failed Septic



Leaky Dumpsters

- Open Lids
- Liquids
- Overfull

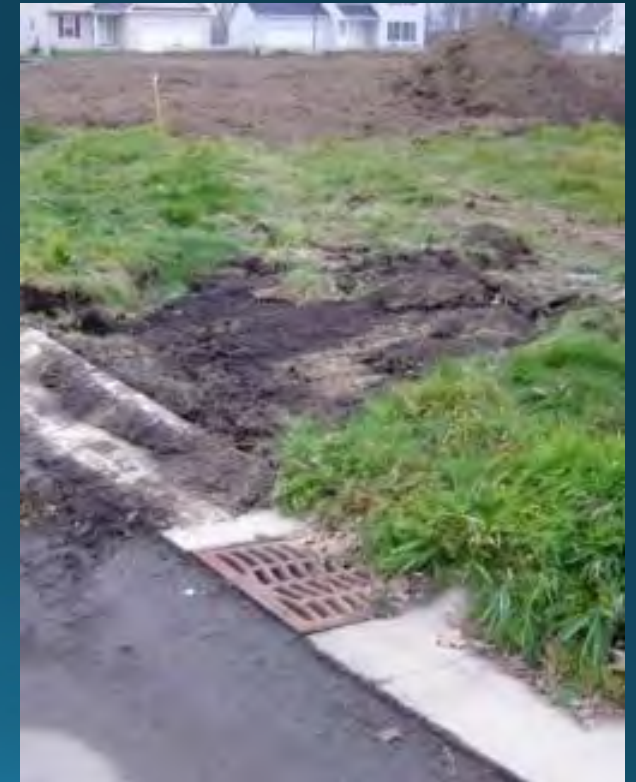
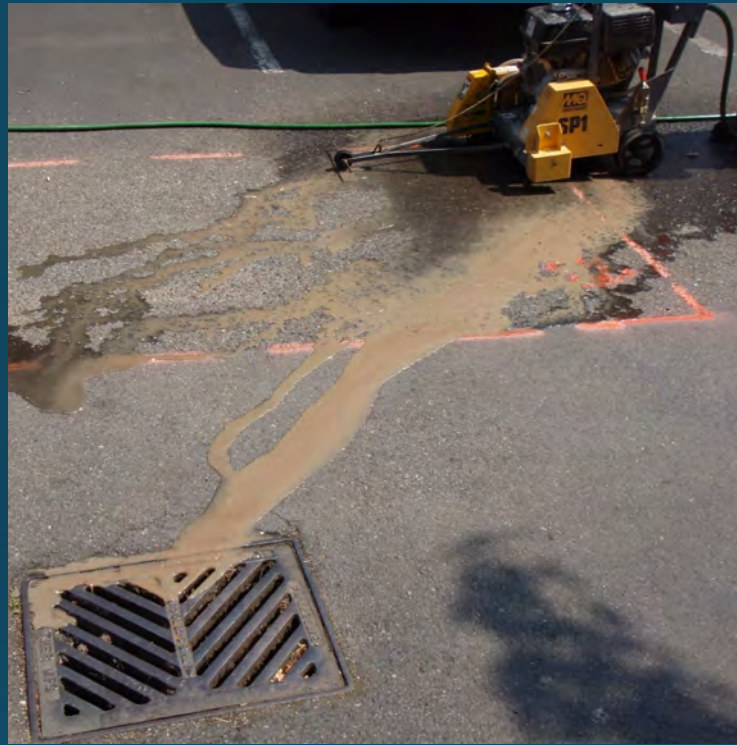


Dumping



Construction Sites

- Sediment Runoff
- Spoil Piles
- Unprotected CB's
- Regulated under Part 31 and 91 of NREPA and implemented by GCDC Water and Waste Services



Concrete Washout

- pH = 12, similar to Drano™
- Increase toxicity
- Contaminates soil and kills plants
- Clogs fish gills
- Wet saw cutting waste has same concerns as concrete washout
- Washout only in designated areas that are lined to contain the wastes and protect soil



Scoop the Poop

- Not fertilizer
- Pollutes water
- Contains harmful parasites and bacteria
- Health hazard for other pets and humans



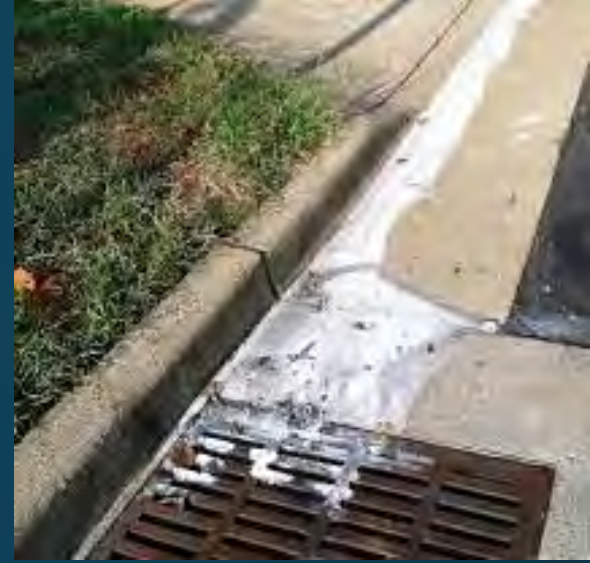
HOW TO CLEAN UP AFTER YOUR DOG

Incidental runoff of
chemicals, raw materials,
yard debris ...



Stay Alert for Common Signs

- Stains on the pavement
- Stressed or dead vegetation
- Open chemical containers haphazardly stored outside
- Discoloration in waterbodies
- Liquid ponding in an area that should be dry
- Lack of documentation for proper disposal
- Soapy or colored water flowing from culverts
- Strange odors



Reporting potential problems?

EMERGENCIES	Agency	Phone
Spills, Releases, other Environmental Emergencies	EGLE Pollution Emergency Alerting System (PEAS)	(800) 292-4706
Emergencies	Police/Fire	911

NON-EMERGENCIES	Agency	Phone
General Illicit Discharge Coordination	Drain Office, Surface Water Management	(810) 732-1590
Human Waste/Failing Septic Systems	Health Department, Environmental Health	(810) 257-3603
Construction Sediment	Drain Office, Water and Waste Services	(810) 732-7870



- Spills and contamination to lakes, rivers, and streams
- Suspicious dumping to catch basins or waterways
- Unusual discharges from pipes
- Sewage on the ground or draining to surface water
- Large number of dead fish in waterways
- Failing or leaky septic systems
- Polluted runoff from storage piles or dumpsters to catch basins or waterways
- Sewage, detergent, chemical, petroleum or rotten egg odors
- Soil erosion from construction sites

Questions?

Follow Up

Investigations

- Field Tests
- Lab Tests
- Upstream Tracking
- Dye Testing

Corrective Actions

- Property owner responsibility



Additional Information

- [GCDC Surface Water Management \(gcdcswm.com\)](http://gcdcswm.com)
- www.ClearGeneseeWater.org
- [EGLE - Municipal Program / MS₄ Compliance Assistance \(michigan.gov\)](http://michigan.gov)
- YouTube
 - [How to Spot and Report Stormwater Pollution – YouTube \(7-minute video\)](#)
 - [Storm Drain - Illicit Discharge Detection & Elimination, a grate concern \(5 min\) – YouTube \(5-minute video\)](#)
 - [NPDES Refresher Training: Illicit Discharge Detection & Elimination – YouTube \(18-minute video\)](#)

Thank you

Genesee County Drain Commissioner
Surface Water Management

4608 Beecher Road
Flint, MI 48532

Office (810) 732-1590
Fax (810) 732-1474
After Hours Emergency (810) 732-2940

www.gcdcswm.com

With support from
Tetra Tech
3497 Coolidge Rd
East Lansing, MI 48823
(517) 316-3940
www.tetrattech.com

