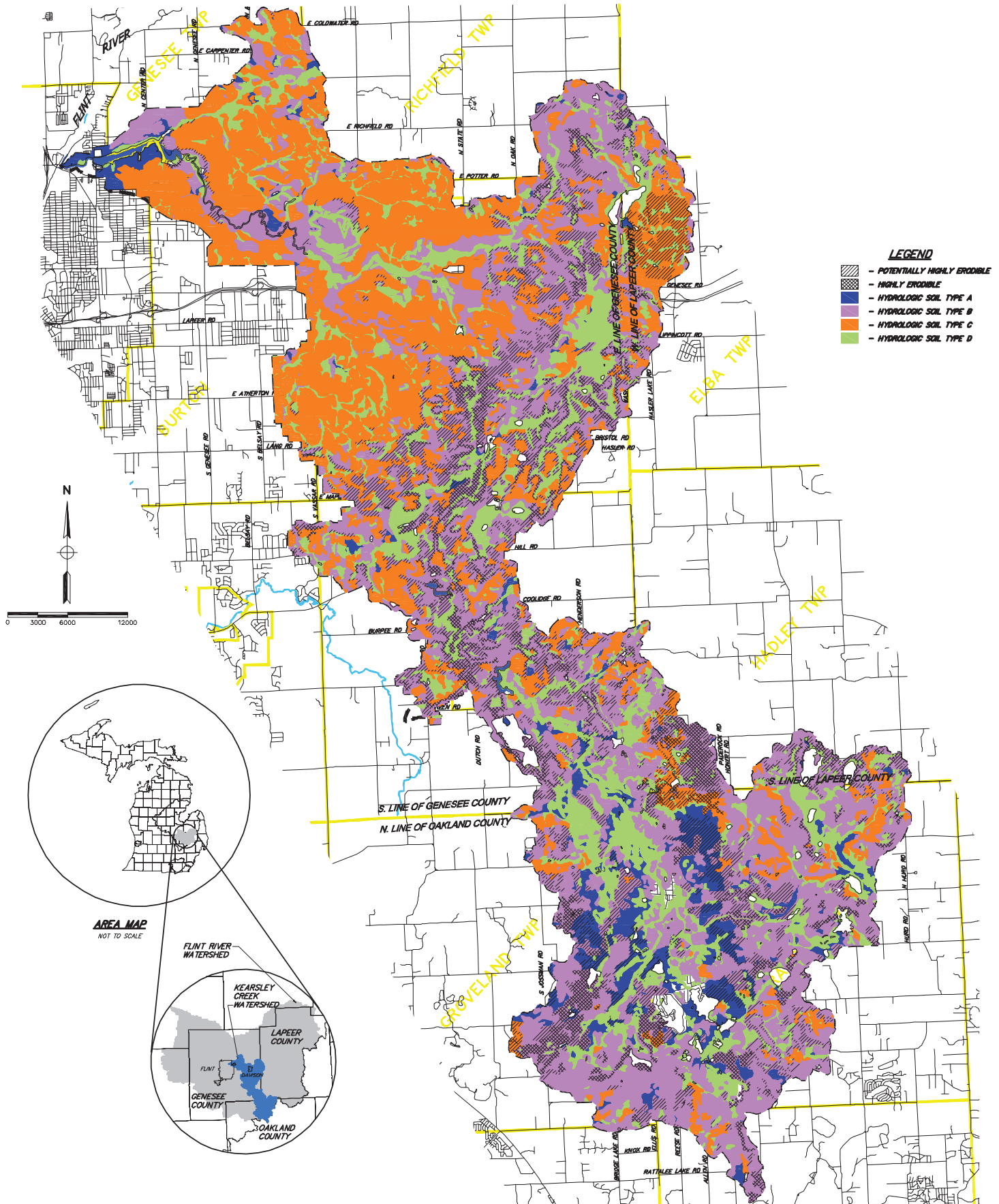


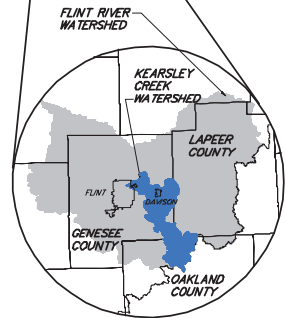
# NRCS SOILS SURVEY

## KEARSLEY CREEK WATERSHED



- LEGEND**
- POTENTIALLY HIGHLY ERODIBLE
  - HIGHLY ERODIBLE
  - HYDROLOGIC SOIL TYPE A
  - HYDROLOGIC SOIL TYPE B
  - HYDROLOGIC SOIL TYPE C
  - HYDROLOGIC SOIL TYPE D

**AREA MAP**  
NOT TO SCALE



Spicer Group  
230 S. Washington  
Saginaw, Michigan 48605  
Tel. 989-754-4717

Spicer Group  
1400 Zeeb Drive  
St. Johns, Michigan 48879  
Tel. 989-224-2355