

In What Sub-Watershed Is Your School Located?

This map shows your school. Can you find it?
Are there any nearby rivers, streams or creeks?

In what sub-watershed is your school located?

As townships, towns and cities grow, more roads and parking lots have to be built. However, when it rains or snows, pavement does not soak up water. Do you see any paved parking lots or roads outside your school?

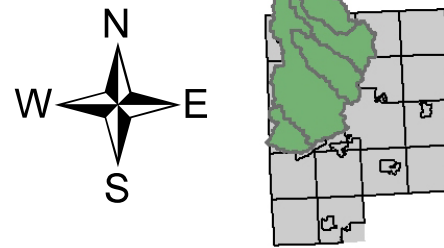
Unfortunately, as clean rain or snow melt (also called storm water) flows over pavement or the ground, it picks up and carries with it pollution like dirt, litter, oil, leaves and animal waste into storm drains. Where does storm water go after it flows into a storm drain?

The storm water that enters storm drains flows directly to our lakes, rivers and streams, carrying all the pollution it has picked up along the way. Common pollutants that wash into our lakes, rivers and streams in storm water include:

- Car fluids such as motor oil or gas
- Chemicals used to kill weeds or fertilizers to grow lawns and gardens
- Pet wastes
- Litter
- Soil from bare ground where vegetation has been removed or killed

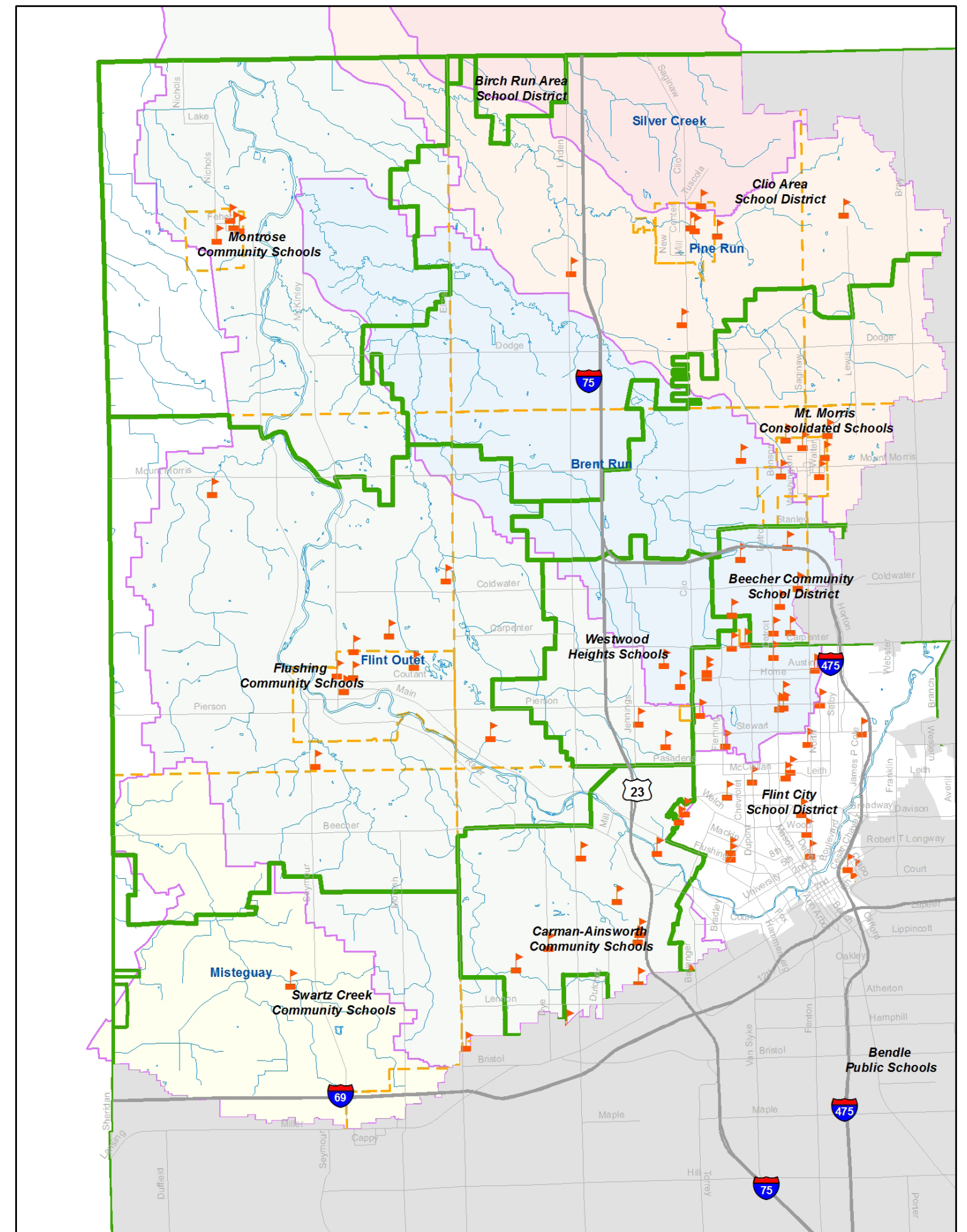
When polluted storm water enters our lakes and rivers, it can cause many problems:

- The plants and animals that live nearby may become sick.
- The humans who drink the water or use it for swimming may become sick.
- The humans who live next to water may notice a bad odor or excessive growth of algae.
- The humans or animals that eat the fish from that polluted water might get sick.



Legend

- School Locations
- Roads
- Waterbodies
- Communities
- School Districts



This is why we need to work together and follow the seven simple steps to keep our water clean!

www.cleargenesee.org